



Type RDA – RDA-1

Aluminum Double End
Break Disconnect
Switch

Volt: 345kV

Amp: All

INSTALLATION &

INSTRUCTION

MANUAL

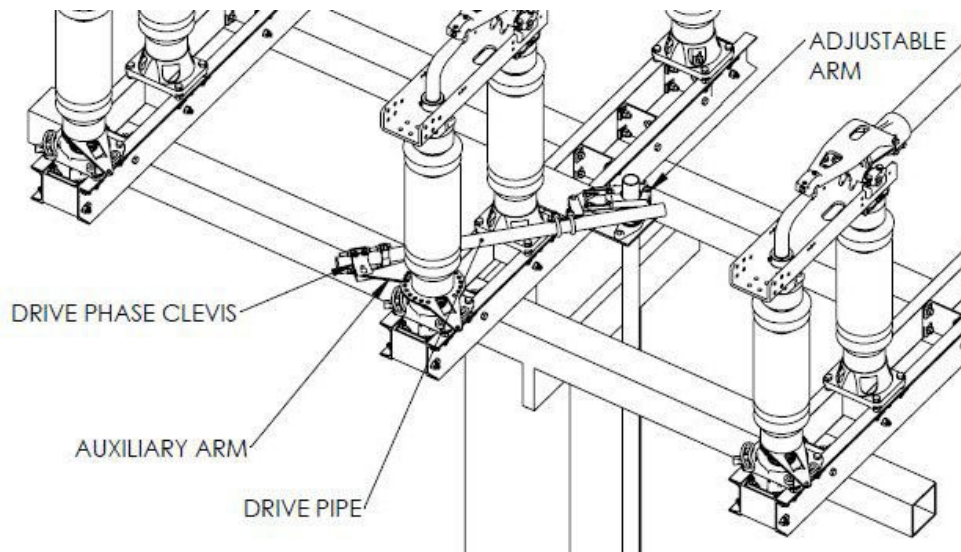
ATTENTION:

Southern States will begin supplying a portion of new operating mechanism designs with Rapid-Set clevises for orders designed after 9/1/23. If your Operating Mechanism print calls for Rapid-Set clevises (see image below for an example), please utilize the instructions on the following pages for all linkage adjustments. If not, please adhere to the standard instructions provided.



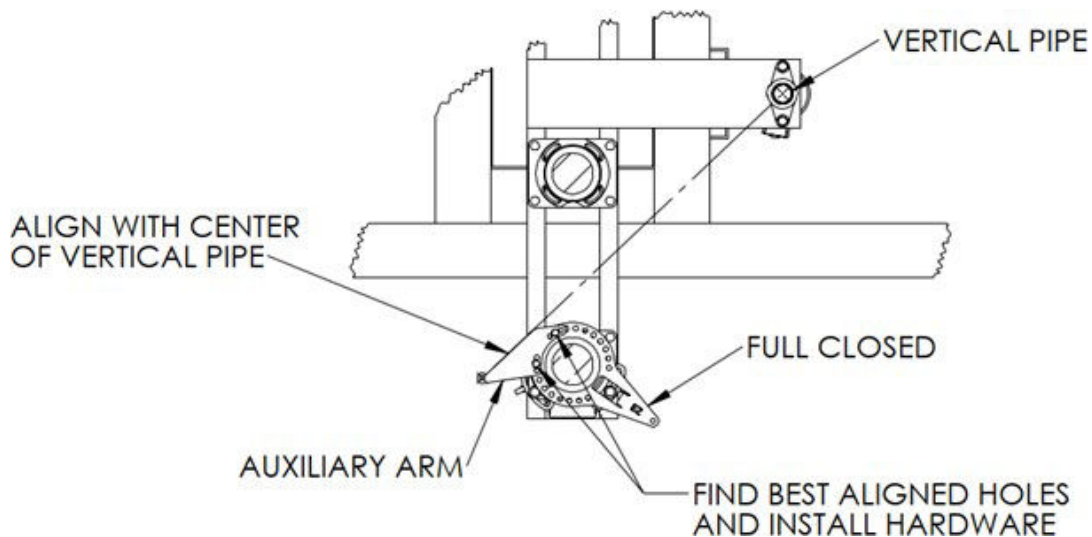


Please scan or use the link below for video instructions of Rapid-Set.
[Southern States Rapid Set Instructions](#)



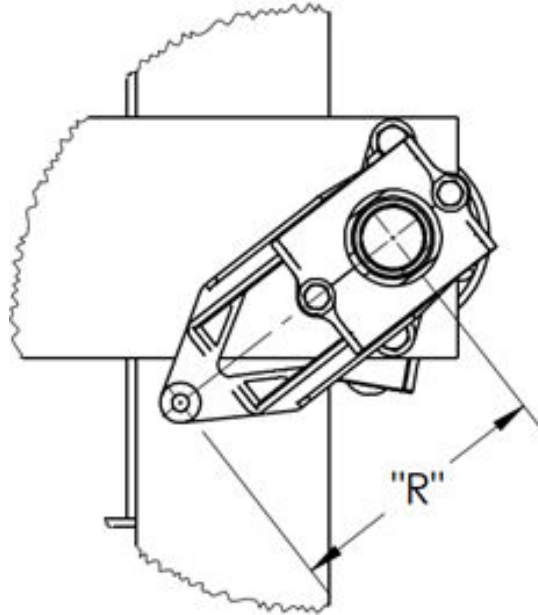
STEP 1:

Install the auxiliary arm by aligning the straight edge of the arm with the center of the vertical pipe and bolting it into place using two of the provided mounting holes. Do this with the switch phase set to the full closed position as shown below.



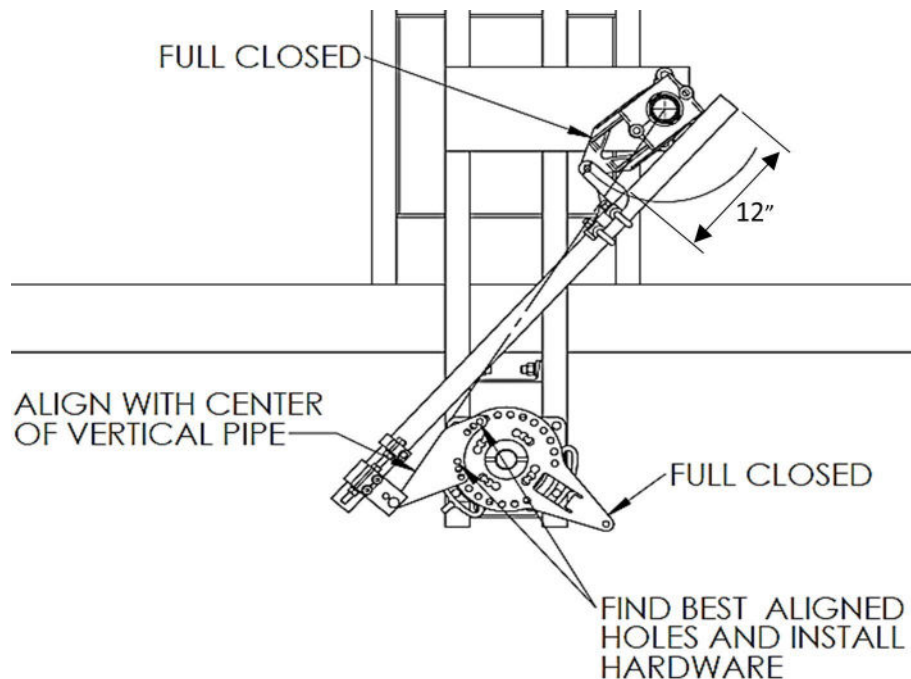
STEP 2:

Install the adjustable arm with the radius "R" set to the recommended length provided in the operating mechanism drawings.



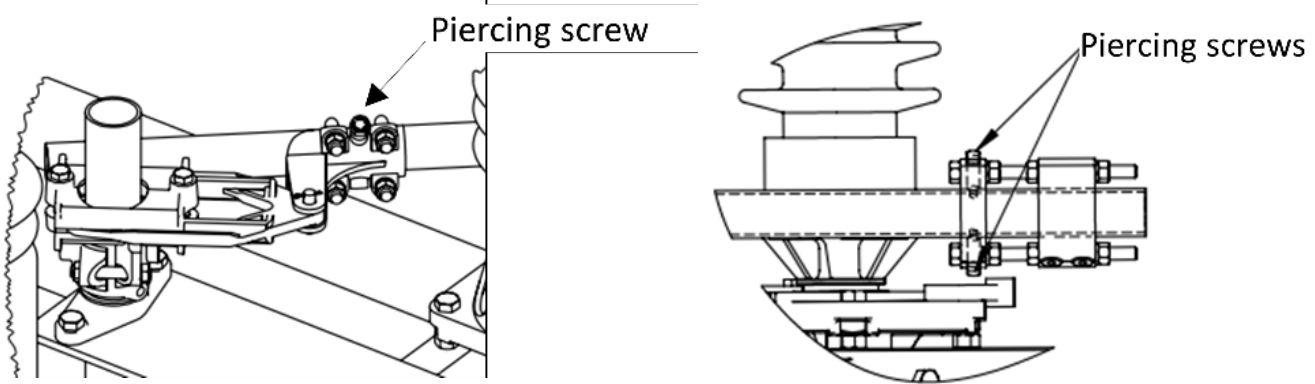
STEP 3:

Install the auxiliary arm Rapid-Set clevis and drive pipe. Ensure that roughly 12" of pipe extends beyond the adjustable arm clevis connection so that the pipe makes contact with the adjustable arm in the position shown. This may be the open or closed position depending on the job specific drawings. The pipe should contact the adjustable arm in this position.



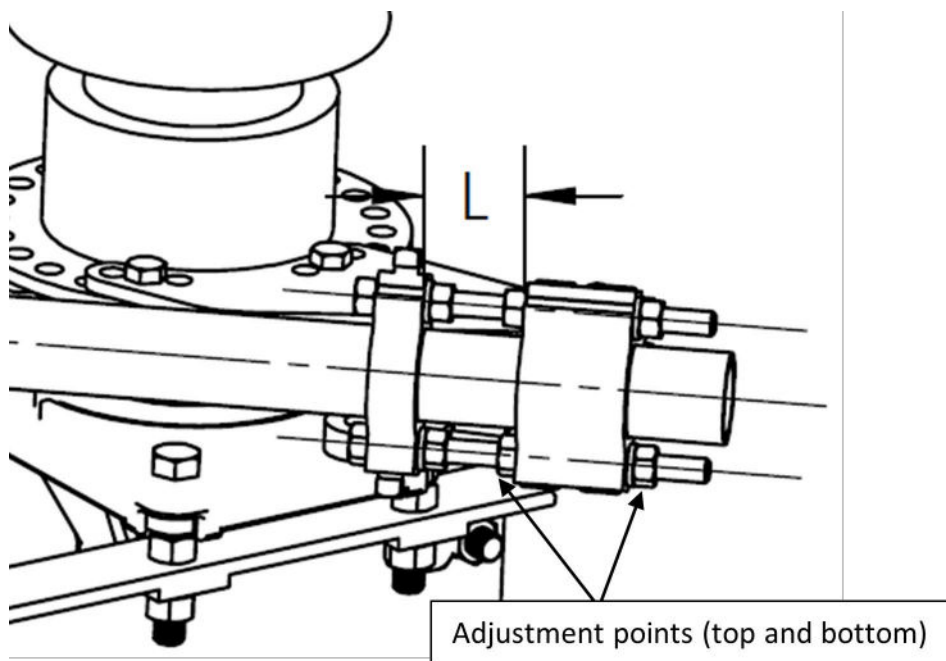
STEP 4:

With the auxiliary arm properly aligned with the vertical pipe and the switch phase in the full closed position, pierce the pipe at both ends. **NOTE:** U-bolt style clevises require pre-drilling on all pipes thicker than SCH40. Drill guides are provided on the operating mechanism BOM when required. Pierce the adjustable arm clevis by hand tightening until it penetrates the pipe and continue until snug (note piercing screw may still have threads showing). Do not remove plastic caps from the Rapid-Set clevis at this time. To pierce the Rapid-Set clevis, tighten each piercing screw until the head contacts the aluminum extrusion. Do not over tighten.



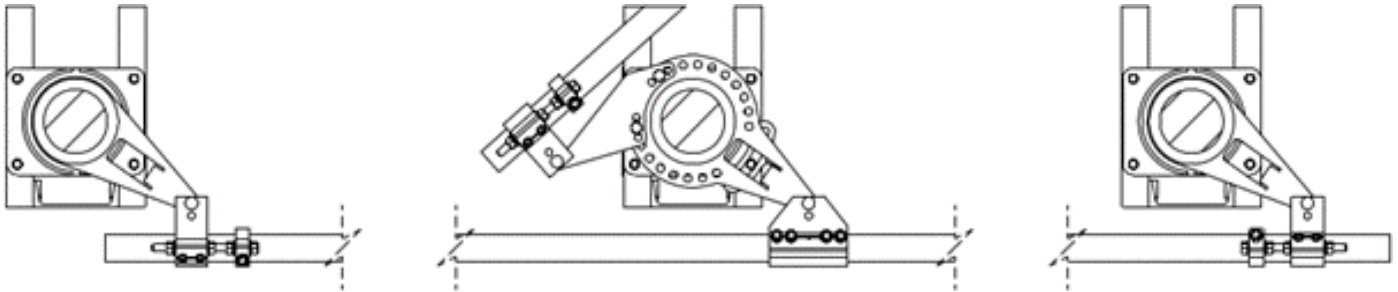
STEP 5:

Begin to manually open the phase using the operator. Observe the phase closed and open stops during operation and modify the length of the adjustable arm as needed to provide the proper amount of travel. Lengthen the arm to add travel and shorten the arm to decrease travel. The mechanism should have sufficient toggle (spring load) during closed and open position. To balance the force at closed and open positions, adjust the length "L" of the Rapid-Set clevis by adjusting the four nuts shown below. Ensure that both the top and bottom sets are adjusted in equal increments.



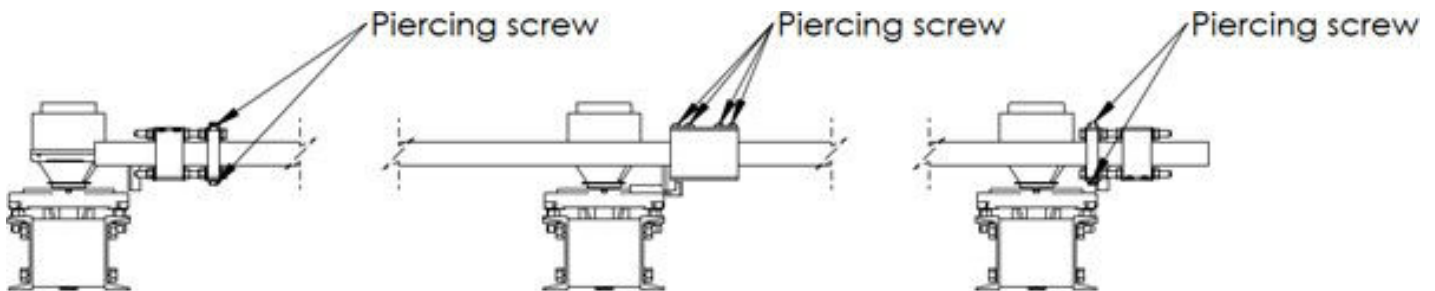
STEP 6:

After the drive phase is adjusted to operate correctly, set all phases to full closed, and install the interphase pipe following the procedure below.

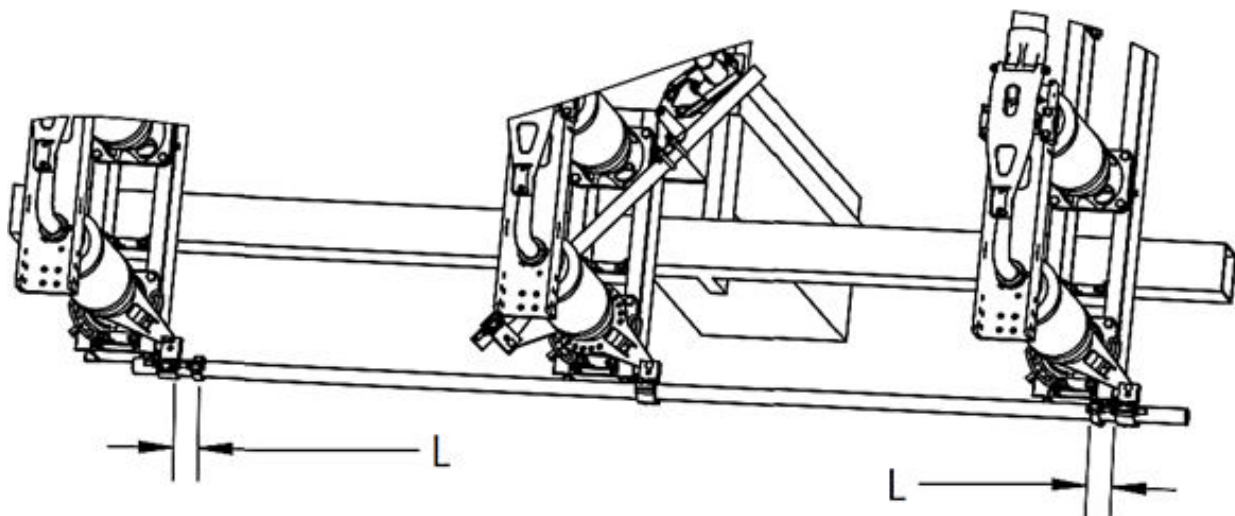


For switches driven by the center phase:

- With the interphase pipe centered and all clevises in place, pierce the interphase pipe at the locations shown. Do not remove plastic caps at this time.



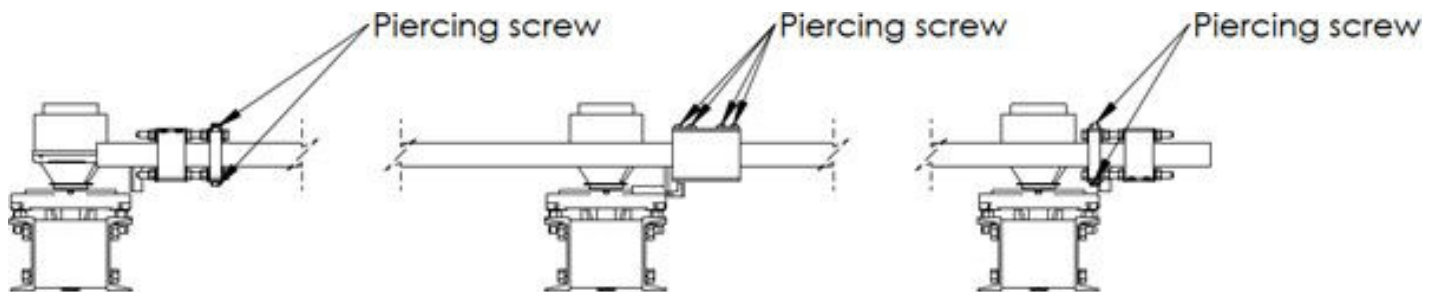
- Adjust the timing of the two driven phases by adjusting the length "L" of each Rapid-Set clevis.



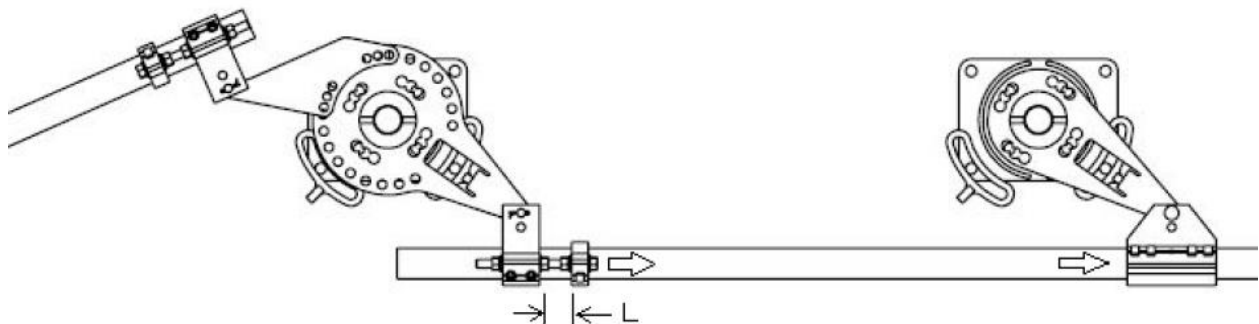
For switches driven by one of the end phases:



- a. With the interphase pipe centered and all clevises in place, pierce the interphase pipe with at the locations shown. Do not remove plastic caps at this time.



- b. Adjust the timing of the center phase by adjusting the length "L" of the Rapid-Set clevis attached to the drive phase.



- c. Set the timing of the last phase by adjusting the length “L” of the Rapid-Set clevis attached to the last phase.



STEP 7:

With all the phases adjusted, open and close the three phase assembly and inspect for proper operation. Once adjustments are finalized, pierce all remaining connections (switch operator, adjustable arm, etc).

STEP 8:

Each Rapid-Set clevis is provided with 2 extra piercing screws. These are for optional use. To install, remove the plastic cover caps and insert the piercing screws as shown below. Note, adding these will restrict any additional adjustment. Remove them before making any future adjustments and then reinstall them on the bottom side of the clevis.



Safety Information

DANGER

IMPROPER HANDLING, INSTALLATION, OPERATION OR MAINTENANCE OF THIS EQUIPMENT MAY CAUSE IMMEDIATE HAZARDS WHICH WILL LIKELY RESULT IN SERIOUS PERSONNEL INJURY OR DEATH.

WARNING

The equipment covered by this publication must be handled, installed, operated and maintained by qualified persons who understand any hazards involved and are thoroughly trained in the handling, installation, operation and maintenance of high voltage transmission and distribution equipment. These instructions are meant for only such **Qualified Persons**. They are not intended to be a substitute for adequate training and experience in safety procedures for this type of equipment.

A **Qualified Person** is one who is trained in and has skills necessary:

- to read and comprehend this instruction book – understanding that these instructions are general in nature
- to accept personal responsibility to prepare and maintain an intrinsically safe work environment and maintain control of the work site to safeguard all persons present
- to develop and implement a proper rigging, lifting, and installation plan along with all safety precautions required to insure safe and proper lifting and installation of the equipment.
- to distinguish between energized and non energized parts
- to determine proper approach distances to energized parts
- to properly work with and around energized or de-energized equipment that may be pressurized with gas
- for proper use of personal protective equipment, insulating and shielding materials, insulated tools for working near energized and /or pressurized electrical equipment
- to recognize and take necessary precautions for the unique and dynamic conditions of site and specialized equipment to maintain a safe work environment during handling, installation, operation, and maintenance of high voltage switching equipment

The instructions in this manual are general guidelines for this type of equipment and not specific to the equipment supplied. Portions of it may not be applicable or may not have complete instructions for your specific equipment.

If you do not understand any part of these instructions or need assistance, contact Southern States Service Division at 770-946-4562 during normal business hours (8:00am – 4:30pm EST, M-F) or 770-946-4565 after normal business hours.



The Quality Name in High Voltage Switching

LIMITED WARRANTY

SLLC warrants only to the Warranty Holder (hereinafter defined as the “End User” or the “Immediate Purchaser”, as applicable, pursuant to the terms and conditions of this Limited Warranty as set forth below), that the Product identified below will, upon shipment, be free of defects in workmanship and material for the applicable Warranty Period. The “Warranty Period” is that period of time during which this Limited Warranty is effective, and such period begins on the invoice date issued by SLLC for the Product, and continues until the earlier to occur of (1) 12 months from the date of installation, (2) 18 months from the date of invoice by SLLC, or (3) as otherwise specified on the Southern States Proposal. “Installation” shall be defined as the Product being assembled in the intended service location and does not require energization to be complete. If the Product is both purchased and installed within the United States or Canada, this Limited Warranty is granted to each end user of the Product who acquired the Product for its own use during the Warranty Period (“End User”). In all other situations, this Limited Warranty is granted only to the first purchaser of the Product (“Immediate Purchaser”) from SLLC. No primary or remote purchaser or owner of the Product who is not a Warranty Holder may claim any benefit under this Limited Warranty, or any remedial promise included in this Limited Warranty. SLLC shall, upon prompt written notice from the Warranty Holder, correct a nonconforming Product by repair or replacement at the sole discretion of SLLC of the nonconforming Product or any part or component of a nonconforming Product necessary in SLLC’s discretion to make such Product conforming. Any transportation charges, labor for removing, reinstalling the Product or part, and/or costs related to providing access to the Product shall be the responsibility of the Warranty Holder. Correction in this manner will constitute the Warranty Holder’s exclusive remedy and fulfillment of all SLLC’s liabilities and responsibilities hereunder. SLLC’s duty to perform under this limited warranty may be delayed, at SLLC’s sole option, until SLLC has been paid in full for all products purchased by the Warranty Holder. No such delay will extend the Warranty Period. If SLLC does not make such repair or replacement, SLLC’s liability for damages on account of any claimed nonconformity will in no event exceed the purchase price of the Product in question. This Limited Warranty does not apply to any Product that has been disassembled, repaired, or altered by anyone other than SLLC. This Limited Warranty will not apply to any Product that has been subjected to improper or abnormal use of the Product. SLLC has no responsibility to repair or replace any Product or component thereof manufactured by another party, but SLLC will assign, to the extent assignable, to the Warranty Holder any manufacturers’ warranty that applies to products and components not manufactured by SLLC.

THIS LIMITED WARRANTY IS EXCLUSIVE AND IN LIEU OF ALL OTHER WARRANTIES. THERE ARE NO OTHER EXPRESS, IMPLIED, OR STATUTORY WARRANTIES. ALL IMPLIED WARRANTIES WHICH MAY ARISE BY IMPLICATION OF LAW, OR APPLICATION OF COURSE OF DEALING OR USAGE OF TRADE, INCLUDING, BUT NOT LIMITED TO, IMPLIED WARRANTIES OF MERCHANTABILITY OR FITNESS FOR A PARTICULAR PURPOSE, NONINFRINGEMENT OR OTHERWISE ARE EXPRESSLY EXCLUDED. SLLC SHALL NOT BE LIABLE OR RESPONSIBLE FOR ANY CONSEQUENTIAL, INCIDENTAL, INDIRECT, EXEMPLARY, SPECIAL, OR PUNITIVE DAMAGES, EVEN IF SLLC HAS BEEN ADVISED OF THE POSSIBILITY OF SAME. THE WARRANTY HOLDER IS SOLELY RESPONSIBLE FOR THE SUITABILITY OF THE PRODUCT FOR ANY PARTICULAR APPLICATION.

Southern States, LLC

Equipment Receipt, Installation, Use, Operation and Maintenance Terms

("Terms of Use")

The purchaser ("Purchaser") of certain Equipment (the "Equipment") identified in the Instruction Manual accompanying these Terms of Use sold by Southern States, LLC ("Southern States"), by Purchaser's acceptance or Use of Equipment in any way, agrees to the Terms of Use set forth below (the word "Use" herein means receipt, testing, inspection, installation, operation, maintenance and otherwise handling the Equipment):

- Purchaser represents and warrants that it is fully qualified to Use the Equipment, and that it is a sophisticated user of the Equipment with a high level of expertise in the Use of the Equipment and Purchaser knows that Southern States is relying on Purchaser's sophistication and expertise with respect to the Equipment.
- The Purchaser will, within seven (7) days after receipt of the Equipment, inspect the Equipment and identify and notify Southern States in writing of any missing parts, damage or defects observed in the Equipment.
- The Purchaser will Use the Equipment, only in conformity with all manuals, data sheets and instructions provided by Southern States, and in keeping with sound engineering, utility and safety practice. Purchaser will at its own expense, provide all necessary labor, supplies, and facilities required to Use the Equipment.
 - The Purchaser may use its own personnel or engage a third party to Use the Equipment. The Purchaser shall insure that it only utilizes personnel who are fully qualified or certified by a reputable certification agency to Use the Equipment. In the event that Purchaser cannot find such qualified personnel, the Purchaser will notify Southern States and seek its advice to determine a mutually agreeable solution.
 - By separate agreement, Southern States may provide such services and the personnel to conduct such services in connection with the installation of the Equipment. In the event Southern States agrees to provide personnel to install, maintain, and operate the Equipment, such personnel will function only in an advisory capacity and shall have no responsibility for the supervision, or the quality or workmanship of such installation, maintenance, or operation of the Equipment.
- The Purchaser shall not install and operate the Equipment in a way such that a single point of Equipment failure leads to a cascading event or consequential damage to any person or property. Purchaser shall ensure redundancy in its system at all times. Purchaser acknowledges and agrees that electric service is by nature subject to interruptions due to Equipment failures and shall not agree to provide service free from the effects of Equipment failures.
- The Equipment will be maintained and inspected as provided by this instruction manual and in compliance with best industry practices, but in no event will the Equipment be inspected and tested less frequently than once in every 6 months.
- The Purchaser shall not repair, dismantle, or alter any of the Equipment without Southern States' written consent.
- Any failure of Equipment either in service, testing or inspection will be promptly reported in writing to Southern States within 24 hours of the failure so that adequate evidence can be collected, appropriate diagnostic tests can be conducted, and analysis of the failure can be determined.
- Southern States will have no liability for any direct, indirect, consequential or remote damage or injury, whether or not foreseen or foreseeable, to the Purchaser or any third party or person for any damages or injury to person or property caused by Purchaser's or any third party's actions, whether or not negligent, in the Use of the Equipment. Purchaser shall indemnify and hold Southern States and its employees, officers and directors against any damage or injury caused in whole or part by Purchaser's or any third party's action whether or not negligent, resulting from the Use of the Equipment. Southern States expressly rejects any liability to third parties. The Purchaser expressly waives any claim against Southern States, its employees, officers, directors and affiliates, for injury or damage to person or property resulting from Use of the Equipment not directly and solely caused by Southern States' negligence. For the purposes of clarity, Southern States shall not be liable, and be fully indemnified by the Purchaser, for the following related to the Equipment: normal wear and tear, excessive use and loading, improper interference or maintenance on the part of the Purchaser or third parties, incomplete or false information given by the Purchaser, inappropriate or improper Use, faulty operation, installation or start-up, faulty or careless handling, improper maintenance, use of unsuitable operating materials/substitute materials, defective construction work, hazardous ambient conditions unknown to the Purchaser, chemical, electro-chemical or electrical influences, changes to the subject of delivery made without Southern States consent.
- In the event that Southern States is found by a court of competent jurisdiction or a properly empaneled arbitral body to be liable to the Purchaser for any reason, Southern States shall be entitled to a reduction in the liability by taking into account the exceptions provided by statute, law, and any counterclaims Southern States may have against Purchaser.
- The failure of Purchaser to comply with these Terms of Use herein shall void any and all warranties related to the Equipment. These Terms of Use shall be deemed to be part of the binding contractual agreements between Purchaser and Southern States related to the Equipment and shall govern over any inconsistent term or provision in such other contractual agreements.

Type RDA & RDA-1

Aluminum Double End Break Disconnect Switch

Volt: 345kV, Amp: All



Table of Contents

| | |
|---|------|
| Table of Contents | VII |
| List of Tables and Figures | VIII |
| Summary & Introduction | 1 |
| Summary | 1 |
| Important | 1 |
| Introduction | 2 |
| Recommended Tools & Values | 3 |
| Product Description | 4 |
| Typical Disconnect Switch | 4 |
| Installation & Adjustment Procedures | 5 |
| Assembly | 5 |
| Proper Contact Engagement | 10 |
| Contact Misalignments and Corrective Procedures | 12 |
| Mounting and Final Adjustment | 15 |
| Operating Mechanism | 17 |
| General Instructions for Threaded Clevises | 20 |
| Recommended Inspection Maintenance | 22 |
| Patrolling Inspection (6 Months) | 23 |
| Routine Inspection and Maintenance (5 year) | 23 |
| Periodic Inspection and Maintenance (10 year) | 23 |

List of Tables and Figures

| Tables | Page |
|---------------|-------------|
|---------------|-------------|

| | |
|---|----|
| Table 1: Recommended Tools and Torque Values | 3 |
| Table 2: Recommended Installation and Maintenance Table | 22 |

| Figures | Page |
|----------------|-------------|
|----------------|-------------|

| | |
|---|----|
| Figure 1: Identification of Parts | 4 |
| Figure 2: Match Mark Locations..... | 5 |
| Figure 3: Insulator Mounting | 6 |
| Figure 4: Jack Screw Adjustment | 6 |
| Figure 5: Rotating Insulator..... | 7 |
| Figure 6: Adjusting the Rotating Insulator for Concentric Rotation..... | 8 |
| Figure 7: Timesaving Tip for Mounting Live Parts | 9 |
| Figure 8: Mounting Switch | 10 |
| Figure 9: Proper Contact Engagement | 10 |
| Figure 10: Blade Tips..... | 11 |
| Figure 11: Blade Rotation | 11 |
| Figure 12: Blade Tip Vertical Misalignment | 12 |
| Figure 13: Blade Misalignment Requiring Bearing Adjustment. | 12 |
| Figure 14: Blade Striking One Jaw Ahead of the Other..... | 12 |
| Figure 15: Corrective Procedure for Misalignments | 13 |
| Figure 16: Jaw Adjustment | 14 |
| Figure 17: Sling attachment..... | 15 |
| Figure 18: Arcing Horn Attachment..... | 16 |
| Figure 19: Arcing Horn Adjustment..... | 16 |
| Figure 20: Improper Arcing Horn Adjustment | 16 |
| Figure 21: Typical Interphase Pipe Arrangement | 17 |
| Figure 22: Adjustable Arm Assembly..... | 18 |
| Figure 23: Adjustable Arm | 18 |

Summary & Introduction

Summary

These instructions do not intend to cover all details or variations in equipment, or provide for every possible contingency to be met in connection with installation, operation or maintenance. Should information be desired or should particular problems arise which are not covered sufficiently for the purchaser's purposes, the matter should be referred to the local Southern States Representative.

The contents of this instruction manual should not become part of or modify any prior or existing agreement, commitment or relationship. The sales contract contains the entire obligations of Southern States. The Warranty contained in the contract between the parties is the sole warranty of Southern States. Any statements contained herein do not create new warranties or modify the existing warranty.

Important

The information contained herein is general in nature and not intended for specific application purposes. It does not relieve the user of responsibility to use sound practices in application, installation, operation, and maintenance of the equipment purchased. Southern States reserves the right to make changes in the specifications shown herein or to make improvements at any time without notice or obligations. Should a conflict arise between the general information contained in this publication and the contents of drawings or supplementary material, or both, the latter shall take precedence.

Summary & Introduction

Introduction

Southern States switches designated RDA and RDA-1 that are rated 345kV come in current ratings of 1600, 2000, and 3000 continuous amperes. The illustration below shows the basic design configuration of these switch lines; however, individual differences may exist between models due to different mounting schemes, insulator types and sizes, and customer requirements. But regardless of their appearance, all RDA and RDA-1 switches share basic mechanical details, and the installation procedure is the same for all.

Since these switches are normally shipped without insulators, installation consists of removing the live parts from the base, mounting the base on the structure, mounting the insulators to the base, and mounting the live parts to the insulator.

These switches may be assembled on the structure, or assembled on the ground and hoisted to structure according to preference. When assembling switches on the ground, be sure the base rests on a firm, level surface. Metal sawhorses, or their equivalent, may have to be constructed for this purpose.

When hoisting switches, LIFT BY THE SWITCH BASE ONLY.

Before mounting the switches on the structure, refer to the Operating Mechanism drawing because there may be differences in the switch poles that require that they be mounted in specific locations.

Do not change any factory setting on the switch unless directed to in this manual.

All photographs and sketches in this manual are for illustration purposes only and may not be to scale. Refer to the Unit Assembly drawing or the Operating Mechanism drawing provided with each disconnect switch for specific details. During installation, it may be necessary to make adjustments other than those described in this manual. Contact your local representative or the factory if questions should arise.

Southern States After Sales and Service Department is available for field installation assistance along with providing parts support for all Southern States products.

Contact After Sales and Service at 770-946-4562.

⚠ DANGER

Indicates an imminently hazardous situation, which, if not avoided, will result in death or serious injury.

⚠ WARNING

Indicates a potentially hazardous situation, which, if not avoided, could result in death or serious injury.

⚠ CAUTION

Indicates a potentially hazardous situation, which, if not avoided, may result in minor or moderate injury. It may also be used to alert against unsafe practices.

Recommended Tools & Values

Table 1: Recommended Tools and Torque Values

| Recommended Tools | | Recommended Torque Values | |
|---------------------------------|------------------------------|---------------------------|----------------|
| Type | Sizes | Bolt/Nut size | Torque (Ft-lb) |
| Hand Wrenches and/or Sockets | 15/16", 3/4", 5/8", 9/16" | 1/2" | 40 |
| Drill Bit | 1/4" | 5/8" | 92 |
| | | 3/4" | 127 |
| | | 1" | 286 |

Product Description

Typical Disconnect Switch

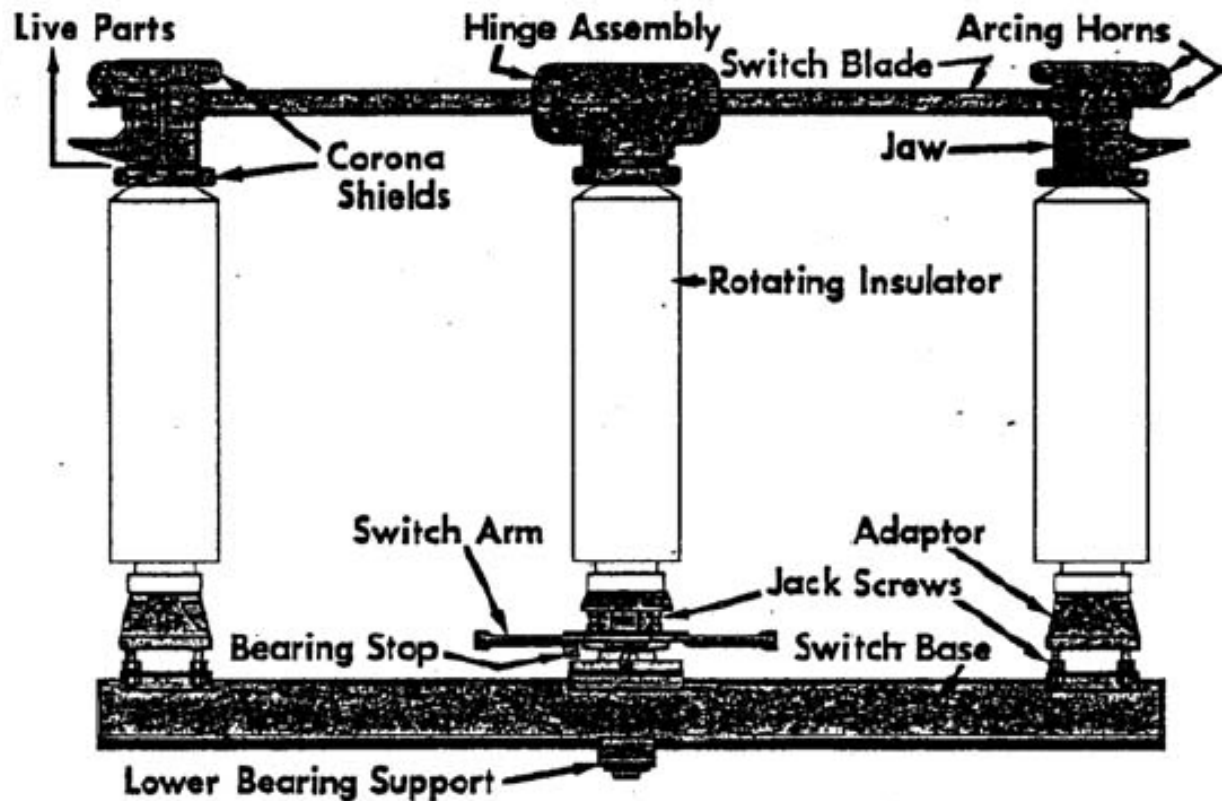


Figure 1: Identification of Parts

(no scale) RDA 345kV, 2,000 amp shown

Installation & Adjustment Procedures

Assembly

The general procedure for installing these switches is as follows:

1. Uncrate the switches, remove the shipping ties, and check for damage in transit. If any damage is found, immediately file a claim with the carrier and notify the factory.
2. Using any convenient means, match mark the lower parts of the hinge assembly with the switch arm and the rotating hub to ensure correct re-assembly as shown in Figure 2. Also match mark one blade tip with its jaw.

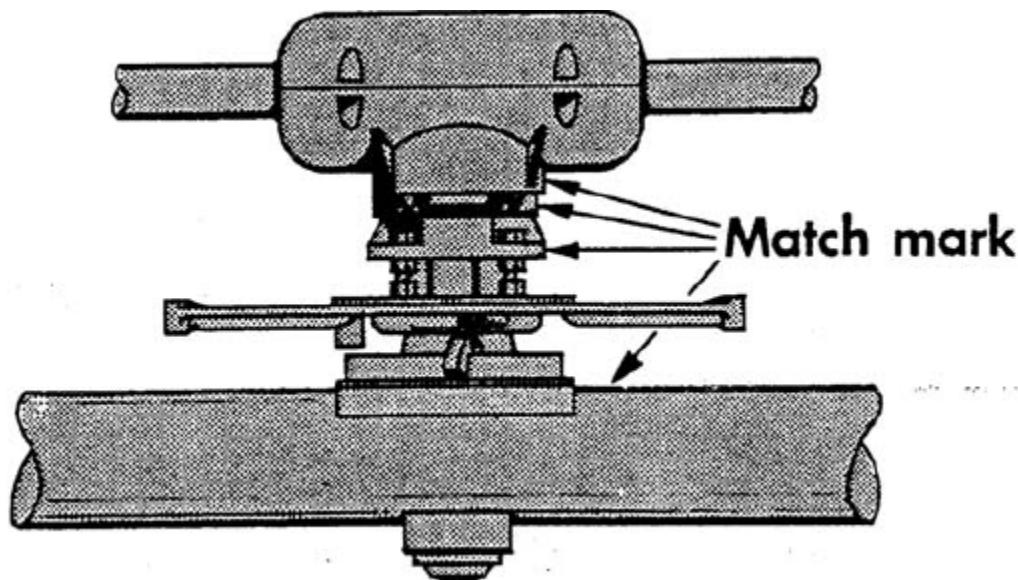


Figure 2: Match Mark Locations

3. Rotate the switch arm to relieve the contact pressure on the switch blade. Remove the live parts from the adaptors and save the bolts for re-use (IF they are of a type specified on the Unit Assembly Drawing for insulator mounting – galvanized, stainless steel, or bronze).
NOTE: Some poles may have an auxiliary switch arm. Check the Op. Mech. Drawing for proper adjustment of this arm.
4. Mount the insulators as indicated in Figure 3, using the bolts specified in the field assembly bolt list (SF Drawing). Be sure that the match marks made earlier line up. Place the corona shields as indicated in Figure 3. If the switch is equipped with a grounding switch jaw or outriggers, spacers will have to be used to maintain equal height of live parts. Refer to the Operating Mechanism Drawing.

Installation & Adjustment Procedures

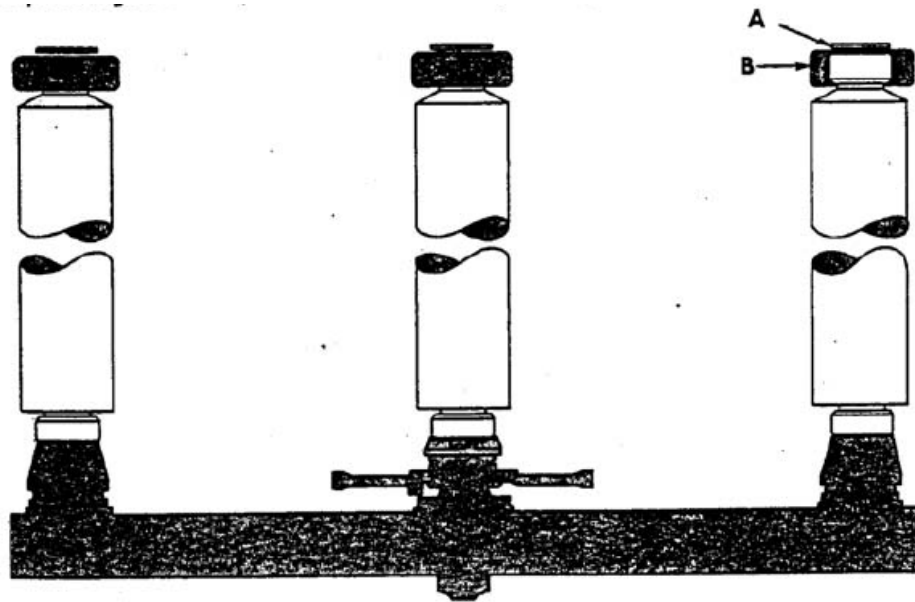


Figure 3: Insulator Mounting

Spacers ("A") are mounted above the corona shields ("B") to maintain equal height of live parts when live part accessories are used. Otherwise, no spacers are supplied.

5. Use a plumb bob or level and true up the end insulators. It is important that they be perpendicular to the base in both planes. Use the jack screws to level these stacks. (Due to the overhang of the insulator skirts, it will be necessary to use a piece of scrap metal or wood to extend the plumb bob string beyond the skirts). See Figure 4 for jack screw adjustment procedure.

Adjustment to these switches mainly concern getting the insulator stacks properly aligned. This is done with the jack screws that support the adaptors to which the insulators are bolted. The best procedure to do this is described below.

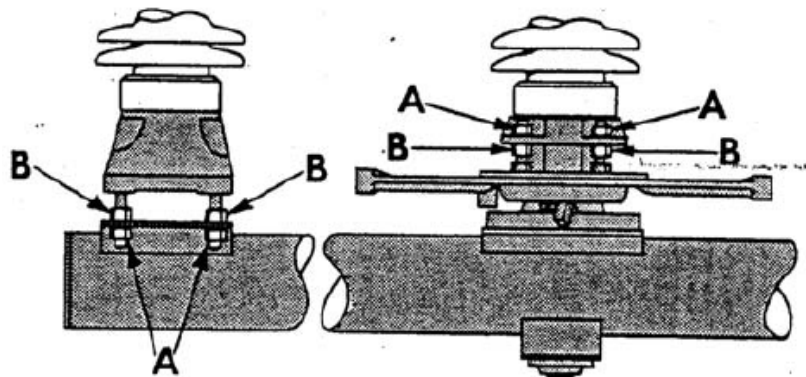


Figure 4: Jack Screw Adjustment

- To adjust the insulator stack, first loosen all four nuts (A). Tilt the insulator to the required position by screwing up or down on nuts (B). Re-tighten nuts (A).

Installation & Adjustment Procedures

6. The rotating insulator requires special attention to ensure good switch operation. It is necessary that this stack rotate about its axis uniformly; that is, it must not “wobble” as it rotates. However, due to irregularities in the mounting faces of individual insulator units, it is not unusual for an insulator stack to be out of alignment six inches or more. And while this switch is designed to tolerate a certain amount of misalignment, the rotating insulator should be adjusted so that evident “wobble” is $\frac{1}{4}$ inch or less. The best procedure to achieve this is described on the following page.

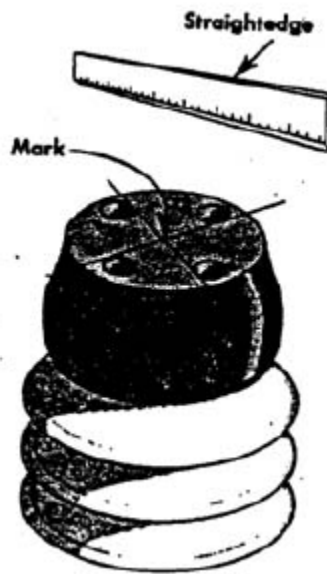


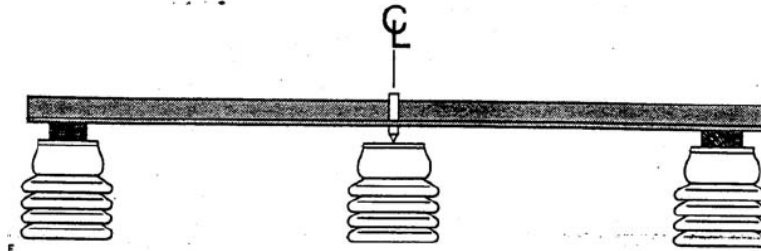
Figure 5: Rotating Insulator

Find and mark exact center of rotating insulator.

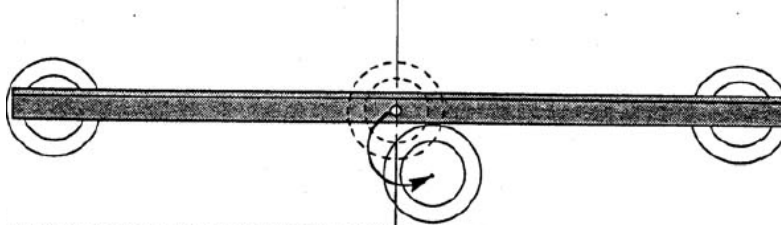
Installation & Adjustment Procedures

Preparation

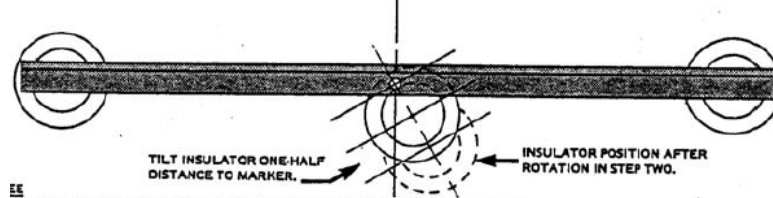
- Place a mark on the exact center of the rotating insulator
- Make a marker of any convenient material such as metal angle or lumber.
- Make a sharp pointer and attach it to the center of the marker. Place the marker over the center of the rotating insulator in such a manner that it can be used as a reference point but does not drag on the insulator top during rotation. Blocks of wood, etc., can be used on the ends to compensate for sag. The marker should be free to be repositioned, as described below.



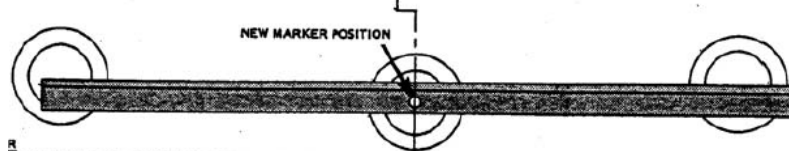
Step One – Rotate the insulator up against a bearing stop and position the reference point over the center of the insulator top.



Step Two – Rotate the insulator to the opposite bearing stop. Observe for eccentric rotation ("wobble").



Step Three – If during rotation the insulator has wobbled. Leave it against the bearing stop in step two. Use the jack screws that mount the rotating insulator to the bearing to tilt it back one-half the distance to the reference point on the marker.



Step Four – Rotate the insulator back to the beginning position (Step One). Reposition the reference point over the center of the insulator. Repeat the last three steps until the insulator rotates true.

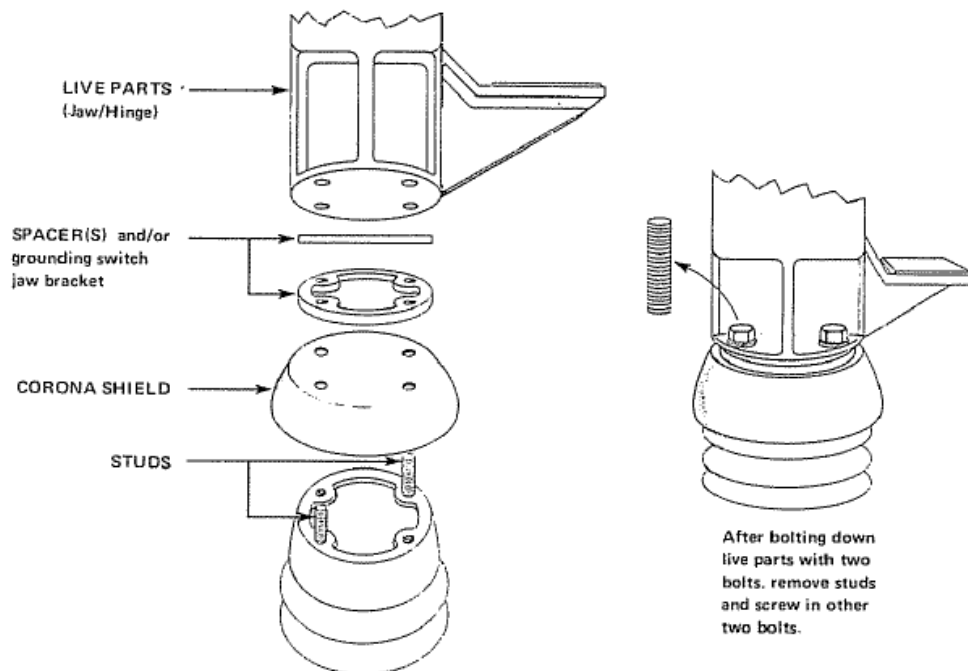
This method works whether the rotating insulator is out of adjustment axially, laterally, or any combination in between.

Once the center insulator rotates true, do not disturb the settings of its jack screws. Any further adjustments will be made with the jaw insulator jack screws.

Figure 6: Adjusting the Rotating Insulator for Concentric Rotation

Installation & Adjustment Procedures

TIMESAVING TIP for mounting live parts when hardware must be placed between the insulator and the live parts: Use two studs of sufficient length to allow later removal (easily made by cutting the heads off two bolts) to align the parts. Bolt the live parts down with mounting bolts, using the two free holes; then remove the studs and screw in the other two bolts.



This procedure can cut a significant amount of time from installation, and will work in all cases except on the center insulator of the double-side-break RDA, RDA-1, and RDC switches.

Where alignment difficulties are encountered with the center stack on double side break switches, match mark and remove the top insulator unit (after adjustment for concentric rotation) and bolt the parts together on the ground, where alignment will be easier. The hoist the blade mechanism assembly and top insulator section into position as an assembled unit and reattach the insulator sections. This will eliminate having to align three non-captive parts in the air. However, if this procedure is used, be sure to match mark the top insulator unit with the next lower unit before removal in order to preserve the concentric rotation adjustments previously made and properly orient the live parts.

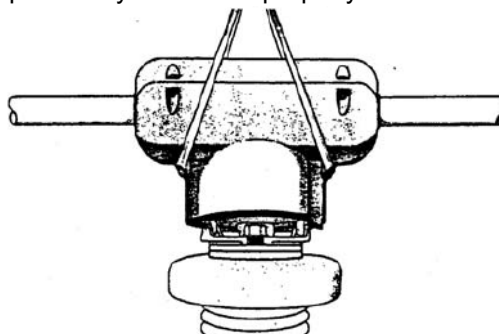


Figure 7: Timesaving Tip for Mounting Live Parts

Installation & Adjustment Procedures

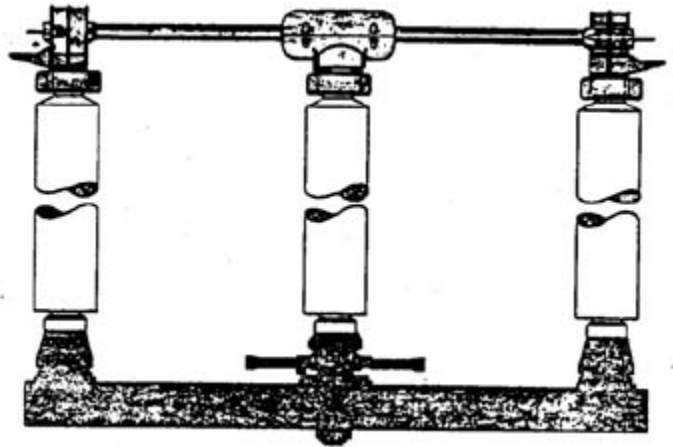
6. Mount the hinge and blade assembly as shown in Figure 8. Be sure that the match marks made earlier are aligned. The jaws also may be mounted at this time.

Note: If applicable, at this time also mount accessories such as: grounding switch jaw, quick break devise, outriggers, etc., as shown on the Op. Mech. Drawing. Use the spacers supplied to maintain equal height of the live parts on the rotating and stationary insulators.

Figure 8: Mounting Switch

FIRST make sure the match marks made earlier are aligned.

Then mount the blade assembly.
Again, make sure the match marks made earlier are aligned.



Proper Contact Engagement

Carefully close the switch, checking for proper contact engagement described below.

NOTE: Final adjustment usually cannot be made to these switches until the conductors are attached. Therefore, the conductors should be bolted on before proceeding further. If this is not possible, be sure to recheck the contact engagements described in A through D below after the conductors are ties on and before energizing the switch.

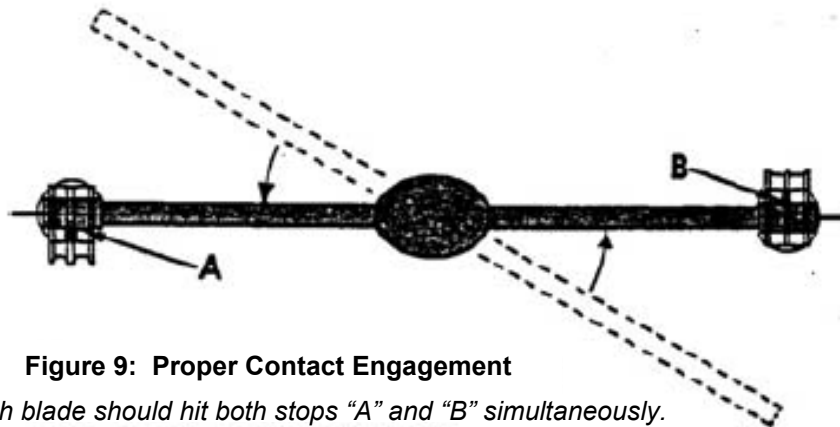


Figure 9: Proper Contact Engagement

The switch blade should hit both stops "A" and "B" simultaneously.

Installation & Adjustment Procedures

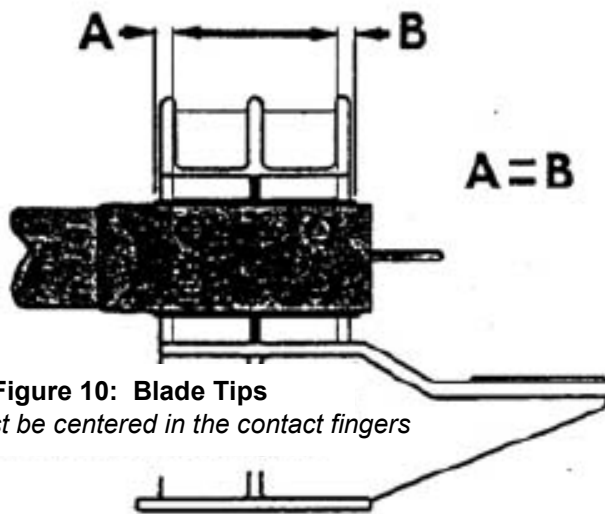


Figure 10: Blade Tips
must be centered in the contact fingers

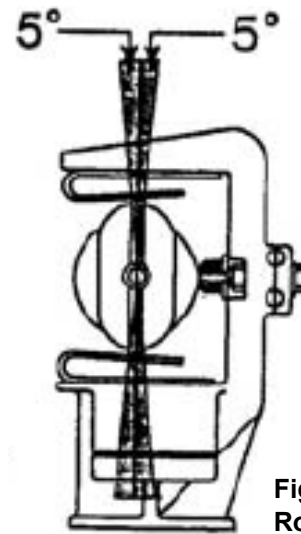


Figure 11: Blade Rotation

- A. The blade tips must hit the stop in the jaws simultaneously (Figure 9). Minor misalignments can be corrected by tilting the jaw insulator stacks with the jack screws.
- B. The blade tips should enter the jaws centrally, without dragging on either contact surface (Figure 10). Minor misalignments can be corrected by jacking the jaw up or down with the jack screws.
- C. The silver of the blade tips should be centered on the silver of the jaw contacts (figure 11). Minor misalignments can be corrected by tilting the jaws toward or away from the center stack, using the jaw jack screws.
- D. Although the switch is fully closed and will have adequate contact pressure if the blade has rotated to within plus or minus 5° or perpendicular in the contacts, every effort should be made to get the tips as nearly vertical in the contacts as possible. Adjust the bearing stops as required.

If the above conditions A, B, or C cannot be achieved with minor adjustments to the jaw insulator jack screws, it will be necessary to make adjustments to the rotating insulator bearing described on the following pages.

Contact Misalignments and Corrective Procedures

- A. Blade tip moves, or attempts to move, vertically, during final rotation in contacts.
Corrective Procedure: The center insulator is not rotating true. Recheck adjustments described in Figure 5.

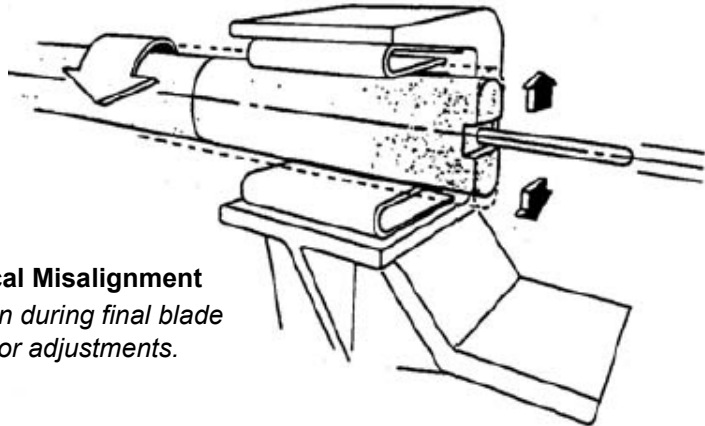
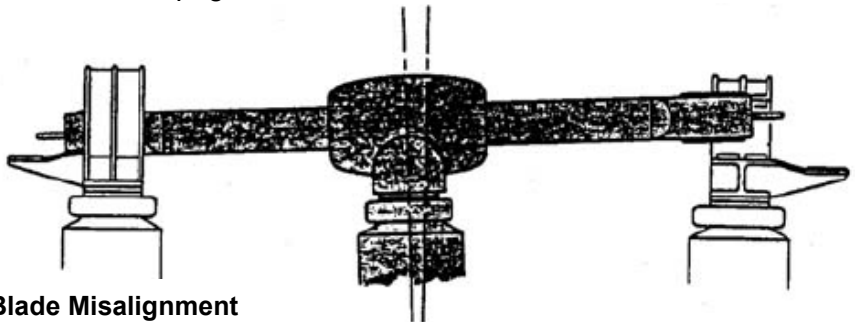


Figure 12: Blade Tip Vertical Misalignment

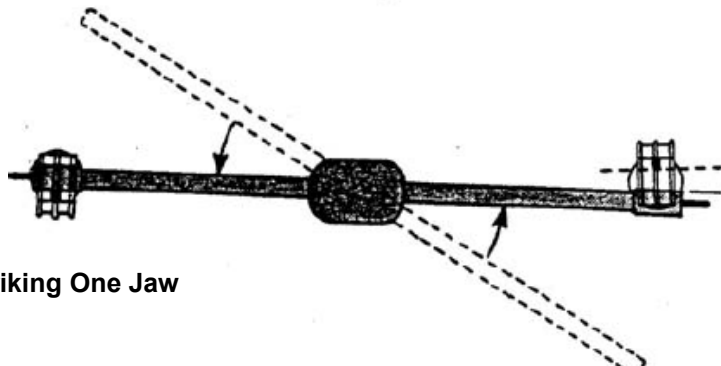
Blade tip attempts to move up or down during final blade rotation. Recheck rotating insulator adjustments.

- B. Blade tip high and short on one jaw, low and long on the other.
Corrective Procedure: See next page.



**Figure 13: Blade Misalignment
Requiring Bearing Adjustment.**

- C. One blade tip striking one jaw ahead of the other.
Corrective Procedure: See next page.



**Figure 14: Blade Striking One Jaw
Ahead of the Other.**

Installation & Adjustment Procedures

- **Corrective Procedure for Misalignments “B” and “C” on previous page:**
If either condition “B” or “C” is encountered, and if it is certain that both jaw insulator stacks are properly plumbed, it will be necessary to adjust the rotating insulator bearing. This is done as follows:
 - Place the switch in an “almost-closed” position and loosen the lower bearing housing bolts as shown.

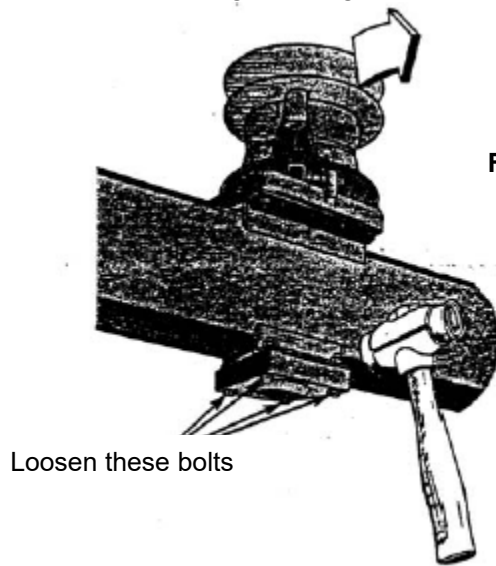


Figure 15: Corrective Procedure for Misalignments

Tap the lower bearing housing in the same direction the insulator is leaning. For example, in Figure 13 in which the stack is leaning toward the left side of the picture, tap the housing in that direction to tilt the stack back to perpendicular, which is to the right of its present centerline.

Use a non-metallic mallet (rawhide or similar) to tap the lower housing until the blade tips are horizontal in the jaws. *NOTE: Due to the height of the stack, very little movement of the bearing housing produces considerable movement of the blade tips.*

Do not use excessive muscle when making this adjustment. Tap the housing only with enough force to produce incremental movements of the insulator stack. The lower bearing housing is case aluminum, which is very strong but can break if struck too hard.

Be sure to tighten the bearing housing bolts securely.

- D. Blade tip enters jaw, but “walks out” when rotating to vertical in contacts.
Corrective Procedure: First, recheck the rotating insulator to make sure it is rotating true (see Figure 6). If concentric rotation is verified but the blade tip still walks out, use the jack screws on the base of the affected jaw stack to adjust the height of the jaw so that the leading edge of the blade tip touches the contact fingers first. This will establish a “Bite-in” action that will assist proper contact seating. However, do not allow the blade to drag across the jaw contacts during entry.

Installation & Adjustment Procedures

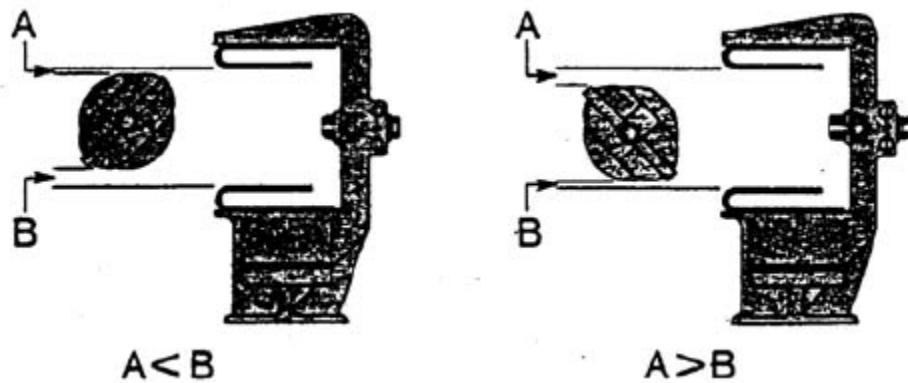


Figure 16: Jaw Adjustment

Adjust jaw up or down so that leading edge of blade tip touches the contact fingers first.

Mounting and Final Adjustment

1. If the switch has been assembled on the ground, at this time mount it on the structure.
LIFT BY THE SWITCH BASE ONLY.

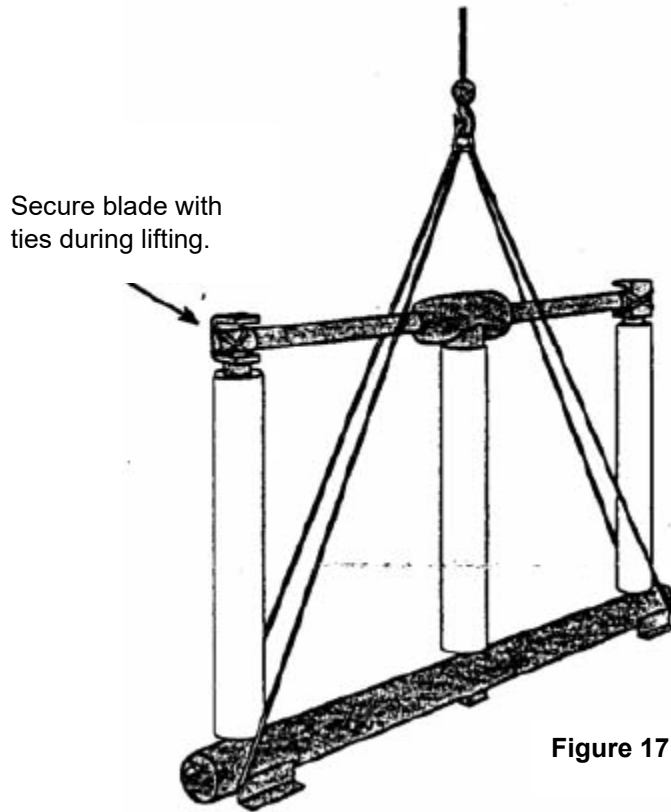


Figure 17: Sling attachment

2. If the adjustments described in the steps above were made while the switch was on the ground, carefully check contact engagement after the switch is bolted to the structure and the conductors are attached.

NOTE: Final adjustment usually cannot be made on these switches until the conductors are attached, because conductor loads often pull tail insulator stacks several inches out of plumb. Therefore, if possible, install the conductors at this time to avoid the possibility of having to readjust the switch later.

3. Install the arcing horn and corona shield on each jaw as shown in Figure 18. The horns should touch *lightly* throughout their stroke. Arcing horns rubbing together with excessive pressure can cause the blade to rotate outside the contacts causing switch malfunction. Bend the stationary horn as required to achieve enough pressure for contact, but not so much as to cause binding.

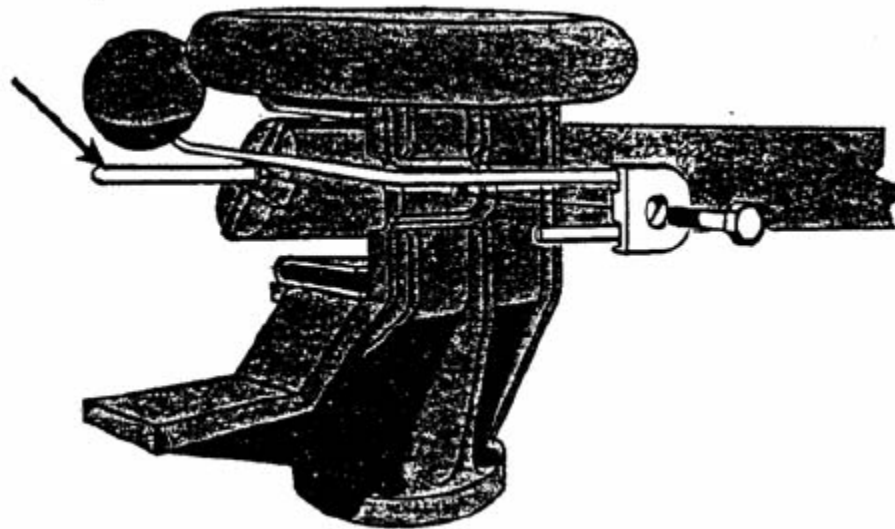


Figure 18: Arcing Horn Attachment.
Blade arcing horn (arrow) goes under jaw horn.

Arcing Horn Adjustment:

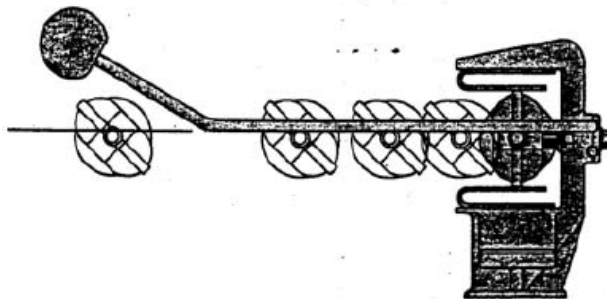


Figure 19: Arcing Horn Adjustment

Correct arcing horn adjustment has horn parallel to movement of the blade tip, allowing light contact through full length of engagement.

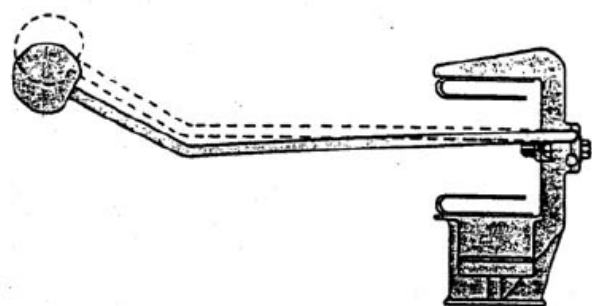


Figure 20: Improper Arcing Horn Adjustment

Improper adjustment allows arcing horn to droop into blade path. Could cause switch malfunction.

4. When all adjustments are made, install the operating mechanism as directed on the following pages.

Operating Mechanism

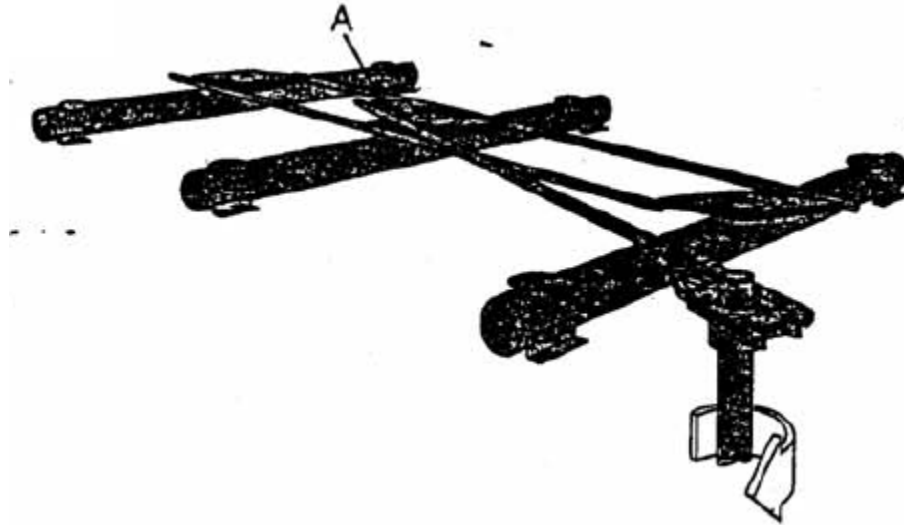


Figure 21: Typical Interphase Pipe Arrangement
Schematic drawing with the auxiliary switch arm at "A".

1. Included with every switch is an Operating Mechanism Drawing (Op. Mech. Drawing). Study this drawing carefully, and with all switch poles closed, install mounting brackets, bushings, manual operation devices (if used), vertical pipe, adjustable crank arm, reach rod, and interphase pipe. *Be sure that pipe collar above the vertical bearing supports the full weight of the vertical pipe.*

IMPORTANT: On some installations you will find self-piercing set screws in the pipe clevises. These screws should be tightened to only grip the pipe during initial adjustments. **DO NOT** pierce the pipe until directed to do so.

NOTE: When a switch pole is equipped with an auxiliary arm, the best method for operating mechanism attachment is to wait until after this pole is completely adjusted before installing the interphase pipes. This will eliminate trying to coordinate and adjust all three poles at once.

2. After mounting all operating mechanism components, use any convenient means to match mark all clevis connections, adjustable arm, and manual operator attachments to check for slippage during trial operations.
3. If a motor operator is to be used, at the point refer to the motor operator installation instructions for mounting and trial operations.
4. Place all switch poles in the fully closed position.

Installation & Adjustment Procedures

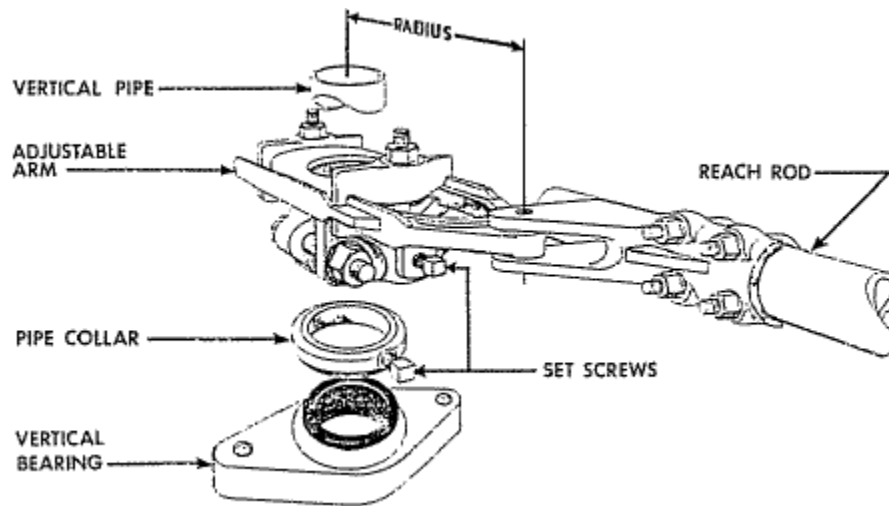


Figure 22: Adjustable Arm Assembly

▲ CAUTION Pipe collar must support full weight of pipe

5. **ADJUSTMENT:** If a motor operator is used, **DO NOT** use electrical operations until all adjustments are made. All grounding switch poles should be closed, all line switch poles open.
 - The adjustable arm should travel 180° from toggle closed to toggle open. Manually test operate.
 - If the switch does not fully open, the radius of the arm is too short. To correct:
 - a. Check first to see that nothing has slipped.
 - b. Return the switch to the closed position.
 - c. Loosen the adjustable arm and clevis bolts as shown below.
 - d. Lengthen the radius of the adjustable arm about $\frac{1}{4}$ inch and allow the clevis to reposition itself the same distance (shortening the pipe).
 - e. Test operate again and adjust as necessary.

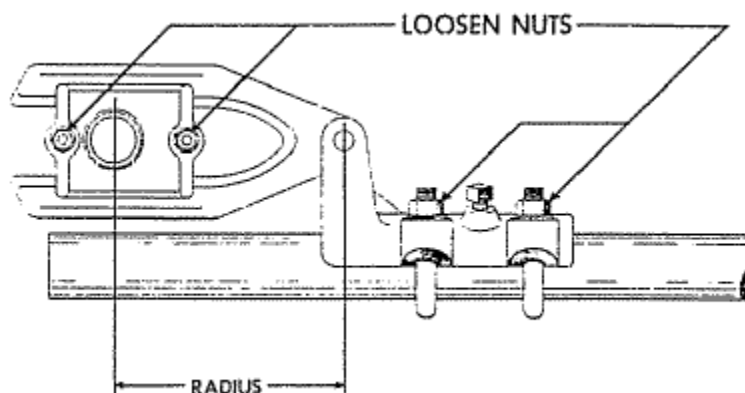


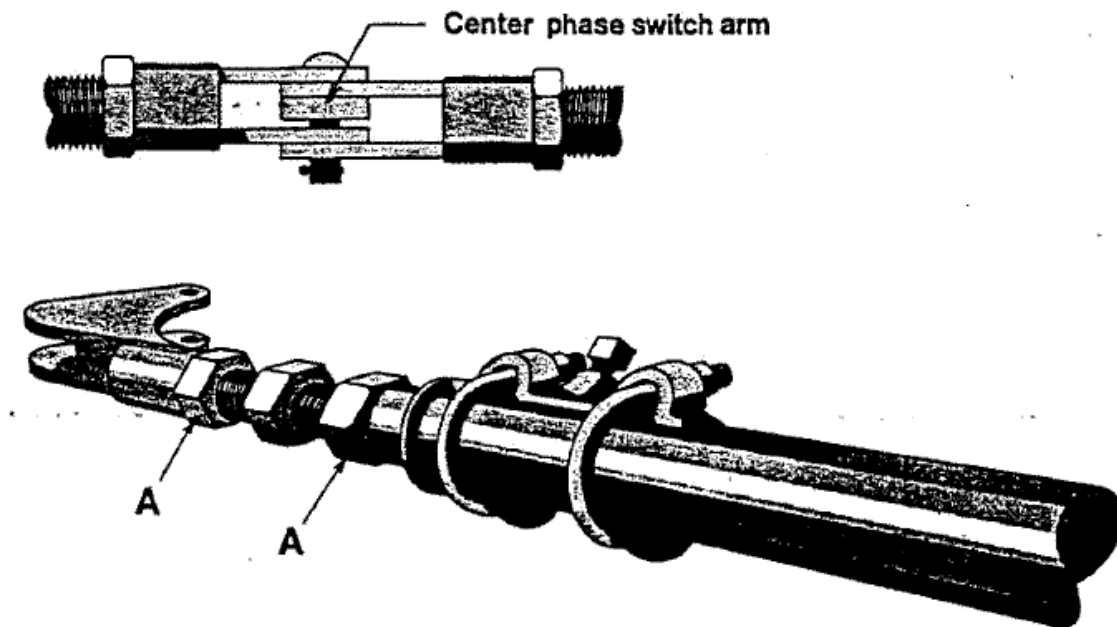
Figure 23: Adjustable Arm

Installation & Adjustment Procedures

- If the switch does not fully open, the radius of the arm is too short. To correct:
 - a. Check first to see that nothing has slipped.
 - b. Return the switch to the closed position.
 - c. Loosen the adjustable arm and clevis bolts as shown in Figure 20.
 - d. Shorten the radius of the adjustable arm about $\frac{1}{4}$ " and allow the clevis to reposition itself the same distance (lengthening the pipe).
 - e. Test operate again and adjust as necessary.
- When the switch is completely adjusted, securely tighten all bolts and tighten all set screws until the pipe walls are pierced. For heavy wall pipe, drill the set screw holes, using the threaded drill guides supplied and a $\frac{1}{4}$ " drill.

General Instructions for Threaded Clevises

When threaded clevises are specified, one is generally attached to the adjustable arm, and two more to the center phase switch arm (refer to the plan view of the operating mechanism drawing and the illustration below).



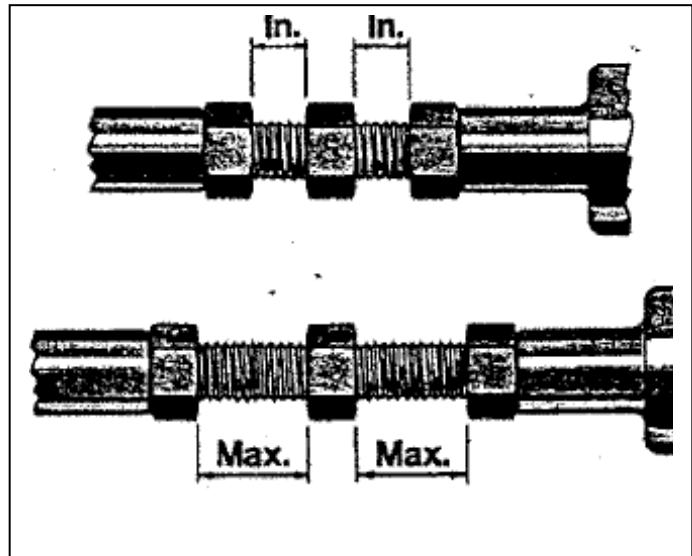
Operating mechanism adjustments consist mainly of incremental lengthenings and/or shortenings of the pipe that connect the switch arms together. To make these adjustments, simply loosen both jam nuts “A” and screw the stud in or out as required. Be sure to retighten both jam nuts securely.

⚠ DANGER Do not screw the stud out of the clevises. This could cause the pipe to fall, resulting in serious injury to personnel below.

Be sure the initial setting is correct, and do not adjust beyond the maximum allowable dimension. If adjustment beyond the maximum allowable dimension is needed loosen the U-bolts on the outboard phase clevis and reposition the pipe toward the center phase.

Initial dimension for $\frac{3}{4}$ " stud is $\frac{11}{16}$ "; 1" stud is $\frac{1}{2}$ ".

Maximum allowable for $\frac{3}{4}$ " stud is $1\frac{3}{16}$ ".
Maximum allowable for 1" stud is 1".



Recommended Inspection Maintenance

Recommended Inspection Maintenance

Southern States' disconnect switches are designed to operate with minimum maintenance. While disconnecting switches are not readily serviced at frequent intervals, *periodic inspection is important for satisfactory operation and maximized overall life*. Frequency of inspection and maintenance depends on the installation site, weather, atmospheric conditions, experience of operating personnel, and any special operation requirements.

During operational testing, the switch should be opened and closed several times, if possible, to clean the contacts and free the moving parts. A visual inspection, when the switch is wet, or temperature scanning detector may indicate hot spots that could serve as potential sources of trouble. Directional microphones or ultrasonic detectors can be used to locate local corona sources on the switches which can be eliminated during normal switch maintenance.

NOTE

It is recommended that maintenance on these switches be performed in accordance with ANSI STANDARDS C37.30.1-2011. In addition, well-established live-line servicing and maintenance procedures may be used in accordance with user practices and local and OSHA regulations.

Table 2: Recommended Installation and Maintenance Table

| | | Installation Tests | Patrolling Inspection 6-months | Routine 5 Year * | Periodic 10 Year * |
|---|--|-----------------------|--------------------------------------|---------------------|-----------------------|
| Insulators | Contamination | X | X | X | X |
| | Damage | X | X | X | X |
| Cabinet (if motor operator supplied) | Any loose parts on the floor of the cabinet? | X | X | X | X |
| | Wiring Secure | X | X | X | X |
| | Links Secure | X | X | X | X |
| | Inspect Mechanism for loose parts | X | X | X | X |
| | Heaters Energized | X | X | X | X |
| | Door Seal | X | X | X | X |
| Mechanical | Operational Tests | X | | X | X |
| Electrical | Contact Resistance | X | | X | X |
| Liveparts Inspection | Inspect Contacts | X | | X | X |
| | Inspect Arcing Horns | X | | X | X |

***NOTE:** Inspection/maintenance is suggested to be performed every two (2) years when installed in harsh environments with excessive airborne contaminants such as salt spray and industrial pollutants.

Recommended Inspection Maintenance

Patrolling Inspection (6 Months)

The patrolling inspection is a largely visual inspection on an energized unit in service. The frequency of the inspection is determined by the local conditions and policies of the owner of the equipment.

- Inspect the insulators for breaks, cracks, burns, or cement deterioration. Clean insulators particularly where abnormal conditions such as salt deposits, cement dust, or acid fumes exist to minimize possibility of a flashover.
- If an accompanying motor operator is supplied, check the cabinet for loose parts and ensure that all wiring is secure, the heater is energized, and the door is sealed.

Routine Inspection and Maintenance (5 year)



The disconnect switch must be de-energized, disconnecting from all electrical power sources before servicing.

- Perform patrolling inspection (above), checking insulators and cabinet
- Once the disconnect switch is de-energized, test operate the switch multiple times.
- Check the switch for alignment, contact pressure, eroded contacts, corrosion, and mechanical malfunction, replacing damaged or eroded components if necessary. If contact pitting is minor, smooth the surface with a clean, fine sandpaper. It is recommended to clean and reapply C5-A grease during any operation or maintenance cycle, as exposed surfaces (*such as contacts*) are vulnerable to environmental conditions and contaminants that can decrease the effectiveness of the grease over time. During reapplication, clean and wipe down the contact surfaces with a green Scotchbrite pad, reapply C5-A grease, and remove any excess grease until an evenly coated, thin film is present.
- Inspect arcing horns for signs of excessive arc damage and replace if necessary.
- Check blade lock or latch for adjustment.
- Inspect all live parts for scarring, gouging, or sharp points that could contribute to excessive radio noise and corona. Check corona balls and rings for damage that could impair effectiveness.
- Inspect interphase linkages, operating rods, levers, bearings, etc. to assure that adjustments are correct, all joints are tight, and pipes are not bent.
- Check for simultaneous closing of all blades and for proper seating in the closed position.
- Inspect and check all safety interlocks while testing for proper operation.

Periodic Inspection and Maintenance (10 year)



The disconnect switch must be de-energized, disconnecting from all electrical power sources before servicing.

- Follow instructions for 5-year Routine Inspection and Maintenance



Southern States

The Quality Name in High Voltage Switching

30 Georgia Avenue
Hampton, Georgia 30228
Phone: 770-946-4562
Fax: 770-946-8106
E-mail: support@southernstatesllc.com
<http://www.southernstatesllc.com>

©2023 Southern States, LLC
IB-111-RDA.RDA-1 R7 345 02142025 Printed U.S.A.