



## WAG-A

Vertical Break Switch

### Ultimate Vertical Break Switch for Maximum Load Current Requirements

Southern States WAG-A vertical break switch defines robustness. This switch with its massive parts has been called upon by customers for over 35 years for the most demanding applications requiring the ultimate in reliability. The WAG-A switch is available for all air break switch applications.

#### BENEFITS

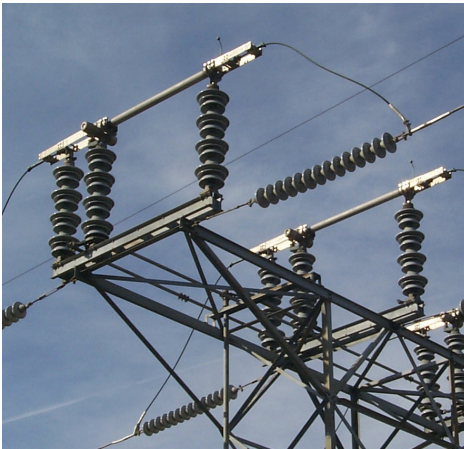
- Meets all ANSI standards
- Field-proven to deliver the maximum reliability
- Specifically designed for heavy duty use
- Maintenance-free, trouble-free service
- Easy installation
- Suitable for horizontal upright, vertical, or underhung mounting

#### SPECIFICATIONS

- Maximum Voltage Rating**  
15.5 kV – 170 kV
- Continuous Current Rating**  
4000 A - 6500A

# WAG-A

Vertical Break Switch



## RATINGS

### Maximum Voltage Rating (kV)

15.5	27	38	48.3	72.5	123	145	170
------	----	----	------	------	-----	-----	-----

### BIL (kV)

110	150	200	250	350	550	650	750
-----	-----	-----	-----	-----	-----	-----	-----

## ADDITIONAL RATINGS

Rated Power Frequency	60 Hz	
Continuous Current	4000 A	5000 A - 6500 A
Short-Time Symmetrical Withstand (3 Sec)	75 kA RMS	89 kA RMS
Peak Withstand	195 kA	231 kA

## KEY FEATURES

- Hinge current transfer via reverse loop contact fingers with silver-to-silver current transfer surfaces
- 6 hole NEMA terminal pads
- Reverse loop jaw contact fingers with silver-to-silver current transfer surfaces
- Double channel base design
- Maintenance free bearings
- Can be furnished with a wide variety of accessories

### Additional Applications

- Line disconnecting
- Line sectionalizing
- Isolation of other substation equipments (circuit breakers, circuit switchers, power transformers, etc)
- Bypassing other substation equipment
- Bus tie positions
- Line dropping/bus dropping/cable dropping/magnetizing current interrupting (when furnished with appropriate arcing horns)