



EVB

Copper Vertical Break Switch

Reliable Operation Using Copper Live Part Construction

Southern States very popular EV aluminum live parts switch also has a copper live parts equivalent - the Southern States EVB - for installation applications where copper live parts are desired. Just like the EV switch, the EVB has been providing reliable service to utilities around the world for over 40 years. The EVB is available for all air break switch applications.

BENEFITS

- Meets all ANSI standards
- Parts constructed of corrosion-resistant copper and bronze.
- Maximum versatility (upright, vertical, or underhung mounting)

SPECIFICATIONS

Maximum Voltage Rating

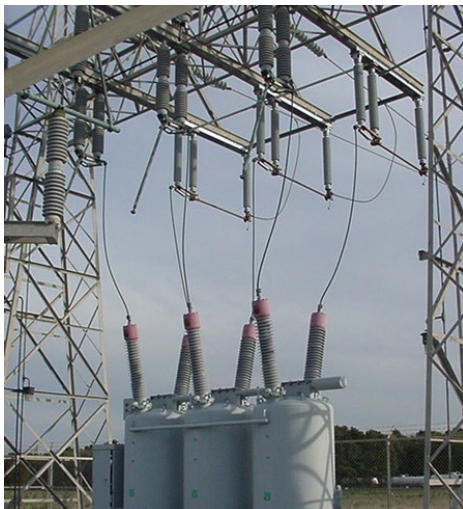
15.5 kV – 170 kV

Continuous Current Rating

1200 A

EVB

Copper Vertical Break Switch



RATINGS

Maximum Voltage Rating (kV)							
15.5	27	38	48.3	72.5	123	145	170
BIL (kV)							
110	150	200	250	350	550	650	750

ADDITIONAL RATINGS

Rated Power Frequency	60 Hz
Continuous Current	1200 A
Short-Time Symmetrical Withstand (3 Sec)	38 kA RMS
Peak Withstand	99 kA

KEY FEATURES

- Copper live part construction
- Reverse loop jaw contact fingers with silver-to-silver current transfer surfaces
- 2 hole or 4 hole NEMA tin plated cast bronze terminal pads
- Maintenance free bearings
- Single channel or double channel base designs
- Hinge current transfer via reverse loop contact fingers with silver-to-silver current transfer surfaces.
- Slant jaw end insulator version also available
- Can be furnished with a wide variety of accessories

Additional Applications

- Line disconnecting
- Line sectionalizing
- Isolation of other substation equipments (circuit breakers, circuit switchers, power transformers, etc)
- Bypassing other substation equipment
- Bus tie positions
- Magnetizing current interrupting (when furnished with appropriate arcing horns)
- Load breaking/loop splitting/line dropping/bus dropping/cable dropping (when furnished with appropriate arcing horns or interrupters)