



EV-2H

Aluminum Vertical
Disconnect Switch
15.5 kV - 362 kV

Robust Current Transfer & Hinge Mechanism Promote Maximum Reliability

Southern States' latest innovation, the EV-2H, supports reliability through its unique design. This heavy duty, highly efficient vertical break disconnect switch utilizes independent mechanical and electrical systems to produce the strongest possible design with the easiest accessible maintenance. An over toggle mechanism in the closed position increases down force for high fault performance. Metal encased coil spring counterbalances reduce operating effort, are impervious to weather, and prevent catastrophic failure that is possible with linear springs. Using an all stainless steel bearing also ensures a long life in all operating conditions.

BENEFITS

- Mechanical operation is independent of the moving current joints, allowing efficient high current transmitting that promotes switch reliability and useful life.
- Superior mechanical strength & corrosion resistance
- Self-cleaning roller bearings & reverse loop current contacts
- Simple, one-threaded adjustment

SPECIFICATIONS

Maximum Voltage Rating

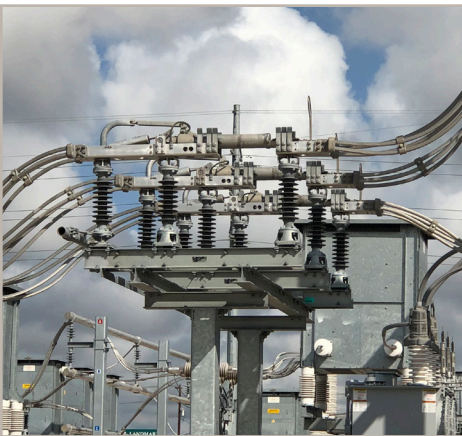
15 kV – 362 kV

Continuous Current Rating

2000 A / 3000 A / 4000 A

EV-2H

Aluminum Vertical
Disconnect Switch
15.5 kV - 362 kV



RATINGS

Maximum Voltage Rating (kV)	15.5	27	38	48.3	72.5	123	145	170	245	362
BIL (kV)	110	150	200	250	350	550	650	750	900/1050	1050/1300
Power Frequency	60 Hz									
Continuous Current	2000 A / 3000 A / 4000 A									
Short Time Withstand (3 sec)	63 kA / 75 kA / 80 kA									
Peak Withstand	164 kA / 195 kA / 208 kA									

KEY FEATURES

- Live parts designed without threaded joints
- Stainless steel shafts used in all pivot joints
- Heavy gauge double channel steel base
- Counterbalance assembly uses coil spring with stainless steel shaft housed in aluminum tube
- Stainless steel roller bearings in an aluminum housing
- Reverse loop current contacts with 10 mils of brazed silver inlay on the hinge & jaw
- Silver to silver current transfer
- High pressure connection at all current transfer points
- Marine grade bushings