



EC-2

Aluminum Center
Break Switch

Robust, Highly Efficient Designs for Low Profile Applications

Southern States EC-2 aluminum center break switch utilizes an independent mechanical and electrical system to produce the strongest possible design with the most efficient current transfer method. The heavy duty hinge utilizes robotically welded aluminum shunts and a one-piece stainless steel rotating pivot with marine grade bushings to also provide maximum rigidity and current carrying surface area. The EC-2 is suitable for horizontal upright, vertical, or underhung mounting.

BENEFITS

- Meets all ANSI standards
- Robotic welding ensures consistent quality
- Superior mechanical strength and corrosion resistance
- Heavy gauge double channel steel base ensures adjustment is maintained
- Welded shunts ensure event current transfer, preventing hot spots
- Large aluminum castings provide superior support for heavy conductors
- Marine grade bushings at all rotating joints are self-lubricating, corrosion resistant, and maintenance free for life

SPECIFICATIONS

Maximum Voltage Rating

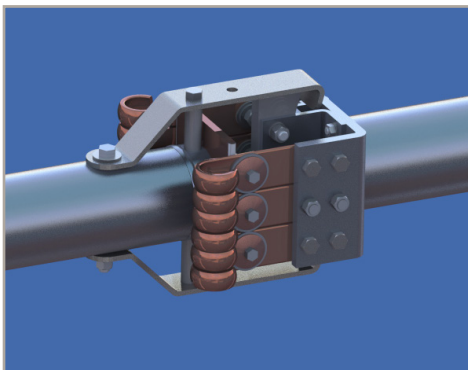
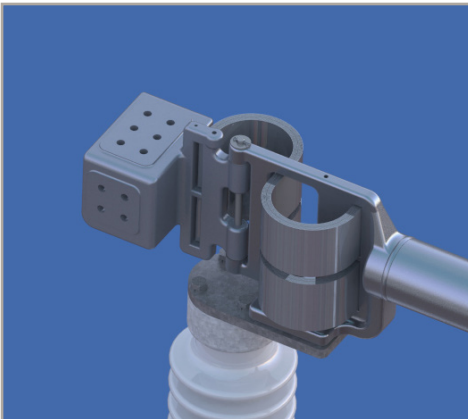
38 kV – 362 kV

Continuous Current Rating

1200 A – 4000 A

EC-2

Aluminum Center
Break Switch



RATINGS

Maximum Voltage Rating (kV)							
38	48.3	72.5	123	145	170	245	362
BIL (kV)							
200	250	350	550	650	750	900/ 1050	1050/ 1300

ADDITIONAL RATINGS

Rated Power Frequency	60 Hz			
Continuous Current	1200 A*	2000 A*	3000 A / 4000 A	
Short-Time Symmetrical Withstand (3 Sec)	38 kA RMS	63 kA RMS	63 kA RMS	80 kA RMS
Peak Withstand	99 kA	164 kA	164 kA	208 kA

* Available up to 245 kV / 1050 kV BIL

KEY FEATURES

- Aluminum live part construction with silver to silver contacts
- Round blade construction for maximum rigidity and current carrying surface area
- One 4-hole NEMA unplated aluminum terminal pad (2000 A)
- Two 4-hole & one 6-hole NEMA unplated aluminum terminal pads (3000 / 4000 A)
- Double channel base designs
- Can be operated with either a manual or VM-1 motor operator
- Available with a wide variety of accessories

Additional Applications

- Line disconnecting
- Line sectionalizing
- Isolation of other substation equipments (circuit breakers, circuit switchers, power transformers, etc)
- Bypassing other substation equipment
- Bus tie positions
- Line dropping/bus dropping/cable dropping/magnetizing current interrupting (when furnished with appropriate arcing horns)