



EC-1

Aluminum Center Break Switch

Aluminum Center Break Switches for Higher kV & Continuous Current Ratings

Southern States EC-1 family of aluminum center break switch ratings has now been expanded to include a 362kV class as well as 4000 A and 5000 A continuous current at many kV ratings. The expanded EC-1 ratings, like all EC-1 switches, are available for all air break switch applications.

BENEFITS

- Meets all ANSI standards
- Maintenance free bearings
- Suitable for horizontal upright, vertical, or underhung mounting
- Easy and fast installation and adjustment

SPECIFICATIONS

Maximum Voltage Rating

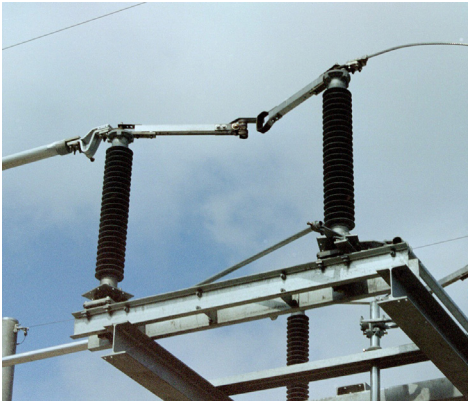
38 kV – 362 kV

Continuous Current Rating

1200 A – 5000 A

EC-1

Aluminum Center
Break Switch



RATINGS

Maximum Voltage Rating (kV)							
38	48.3	72.5	123	145	170	245	362
BIL (kV)							
200	250	350	550	650	750	900/ 1050	1050/ 1300

ADDITIONAL RATINGS

Rated Power Frequency	60 Hz			
	Continuous Current	1200 A	2000 A - 3000 A	4000 A
Short-Time Symmetrical Withstand (3 Sec)	38 kA RMS	63 kA RMS	75 kA RMS	80 kA RMS
Peak Withstand	99 kA	164 kA	195 kA	208 kA

KEY FEATURES

- Aluminum live part construction with silver to silver contacts
- Square blade construction for maximum rigidity and current carrying surface area
- 4 hole or 6 hole NEMA tin plated copper terminal pads
- Single channel or double channel base designs
- Can be operated with either a manual (swing handle or worm gear) or Southern States type VM-1 motor operator
- Available with a wide variety of accessories

Additional Applications

- Line disconnecting
- Line sectionalizing
- Isolation of other substation equipments (circuit breakers, circuit switchers, power transformers, etc)
- Bypassing other substation equipment
- Bus tie positions
- Line dropping/bus dropping/cable dropping/magnetizing current interrupting (when furnished with appropriate arcing horns)