

**ICS**<sup>®</sup>

Intelligent Circuit Sensor

## At last, the **ICS**<sup>®</sup> Intelligent Circuit Sensor brings true digital measurement, control, and automation to the transmission grid.

The ICS is a digital measurement and control systems designed as a solutions platform for transmission networks. It is designed to operate in the same harsh environments as our transmission substations and power lines. The ICS provides information currently not available on transmission networks on an economic and performance scale unrealized until now.

### FEATURES

- Zero footprint, can be mounted on overhead structures
- Provides RMS current values to ensure power flow
- Easy installation and retrofit
- Digital solutions platform for smart algorithms
- Communicates to the network with standard protocols
- Remotely programmable and configurable
- Sensing units do not require batteries and are sealed for life requiring no maintenance.

### SPECIFICATIONS

**Rated Voltage**

38kv - 320kv

**Rated Load Currents**

Up to 4000 Amp

**Rated Fault Current**

40 kA

**ICS®**

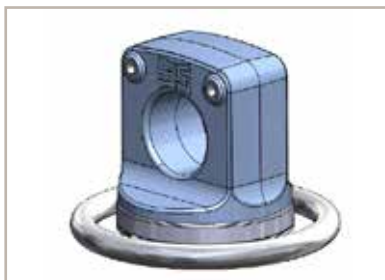
Intelligent Circuit Sensor

Ratings and Specifications

Applicable Voltages	15kV to 320kV
Communications	Serial and Ethernet
Protocols	DNP 3.0, Modbus
Current Sensing	up to 20,000 Amps
Installation	Zero foot print, mounts on switch

INTELLIGENT CIRCUIT SENSOR - ICS®

- The Southern States ICS , Intelligent Circuit Sensor, provides real time waveforms captures
- The digital platform allows specialized algorithms to be built into the ICS
- The ICS consists of:
  - Electronic current sensor
  - Receiving module
  - Substation hardened digital computer



Patented electronic current sensor  
Requires no batteries



Digital processing receiving



KEY ADVANTAGES

- Tie switch operation confirmation
- EHV monitoring
- Reactor switch monitoring