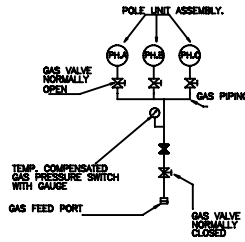
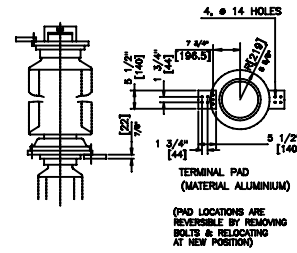


SF6 GAS SCHEMATIC DIAGRAM



NOTE:- CLEAN BOTH CONNECTING SURFACES OF TERMINAL PADS AND TERMINAL FLANGE WITH SAND PAPER AND COAT SUPPLIED COMPOUND BEFORE CONNECTING.

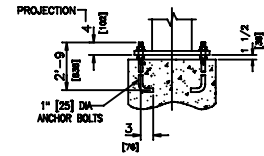


TERMINAL PAD (MATERIAL ALUMINIUM)  
(PAD LOCATIONS ARE REVERSIBLE BY REMOVING BOLTS & RELOCATING AT NEW POSITION)

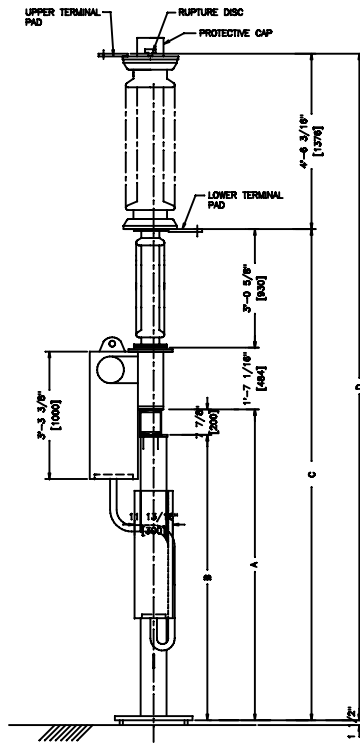
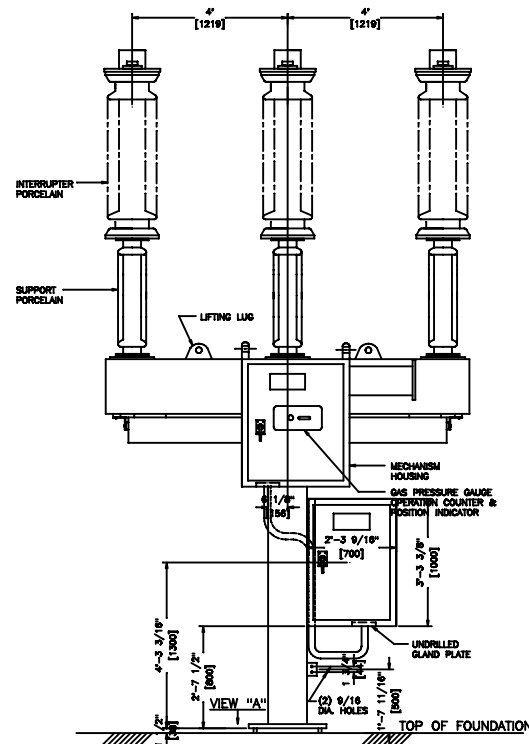
DIMENSIONS IN INCHES (APPROX.)				
A	B	C	D	WEIGHT (PER 3 PHASE)
STRUCTURE HEIGHT	COLUMN HEIGHT	LOWER TERM. PAD HEIGHT	UPPER TERM. PAD HEIGHT	
96 [2438]	88 1/8 [2238]	151 11/16 [2853]	205 13/16 [5228]	4522 lbs. [2051 kg.]
120 [3048]	112 1/8 [2848]	175 11/16 [4462]	229 13/16 [5835]	4596 [2084 kg.]
144 [3658]	136 1/8 [3498]	199 11/16 [5072]	253 13/16 [6447]	4658 [2112 kg.]

- TOTAL GAS WEIGHT : 16 lbs. [8.0 Kg] (APPROX.)
- MAXIMUM IMPACT LOAD DURING OPERATION : 4410 lbs. [2000 kg.] UPWARD & DOWNWARD.
- FINISH :- ALL EXPOSED FERROUS PARTS ARE PAINTED WITH SHADE ANSI 70 GRAY.
- CREEPAGE DISTANCE SUPPORT INSULATOR: 86 37/64 [2250 mm].  
CREEPAGE DISTANCE INTERRUPTER INSULATOR: 114 11/64 [2900 mm].
- HARDWARES EXPOSED TO ATMOSPHERE ARE EITHER HOT DIP GALVANIZED OR STAINLESS STEEL.

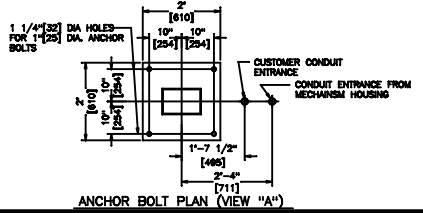
DETAIL OF UPPER AND LOWER TERMINAL PADS



ANCHOR BOLT DETAIL



TYPE	CSV	CIRCUIT SWITCHER
kV, NOM.	88	kV, MAX. 72.5
FREQ.	60	Hz
BL. DISCONNECT BLADES	N/A	kV
BL. INTERRUPTERS	2000	kV
BL. INSULATORS	3000	kV
CONTINUOUS CURRENT	3000	A
PRIMARY FAULT CURRENT INTERRUPTING	40	KA
TRANSFORMER THRU FAULT INTERRUPTING	4	KA
SHORT TIME CURRENT	100	KA
FAULT CLOSING RATING	40	KA
TIMES	10	
PSIG NORMAL OPERATING PRESSURE AT 20°C	122	
INTERRUPTING TIME	3	CYCLES 4.0 (SEE TABLE)
STYLE	8301000X	MFR. DATE
OPERATING MECHANISM DRAWING	D-8301000X	
CUSTOMER INFORMATION		



NOTE: DIMENSIONS SHOWN IN " [ ] " ARE IN MILLIMETERS & KILOGRAMS.

PROPOSAL DRAWING  
NOT FOR CONSTRUCTION  
SPECIFICATIONS SUBJECT TO CHANGE

THIS DRAWING AND THE INFORMATION HEREIN ARE THE PROPERTY OF SOUTHERN STATES, LLC AND ARE PROVIDED FOR THE EXCLUSIVE USE OF OUR CUSTOMERS, SUPPLIERS AND VENDORS. THE DRAWING OR INFORMATION IS NOT TO BE COPIED OR REPRODUCED BY ANY OTHER PARTY WITHOUT THE SPECIFIC WRITTEN APPROVAL OF SOUTHERN STATES, LLC.

		20 SOUTHERN AVENUE MEMPHIS, TN 38118 TEL: (901) 841-3100
<b>PROPOSAL OUTLINE</b> <b>CSV 72.5 kV</b> <b>48" PHASE SPACING</b>		
DRAWN: 7/21/06 CAB CHECKED: [ ] DESIGNED: [ ]	DATE: 7/21/06 SHEET NO. 1 OF 5 PD-CSV 72.5_48 PH	APPROVED BY: [ ] TITLE: [ ]