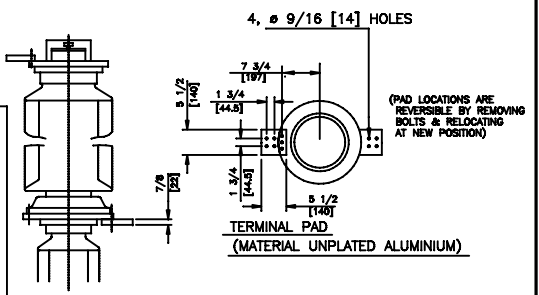
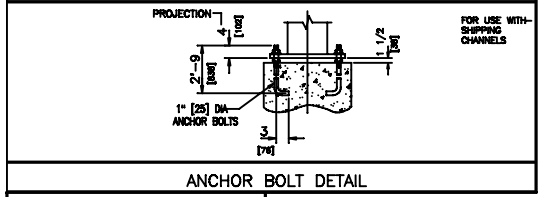


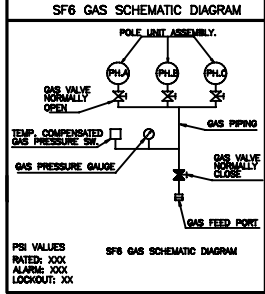
NOTE:- CLEAN BOTH CONNECTING SURFACES OF TERMINAL PADS AND TERMINAL FLANGE WITH SAND PAPER AND COAT SUPPLIED COMPOUND BEFORE CONNECTING.



DETAIL OF UPPER AND LOWER TERMINAL PADS

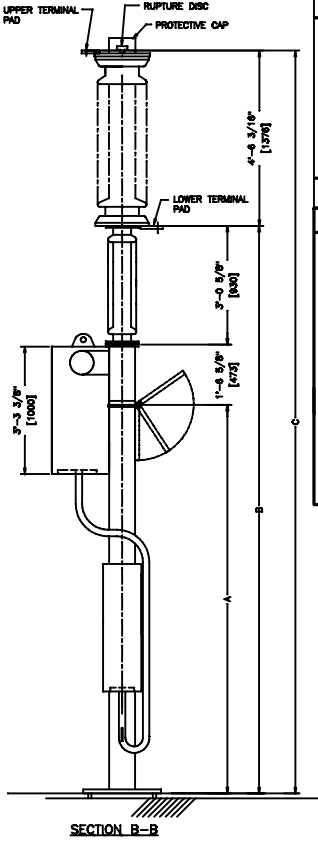
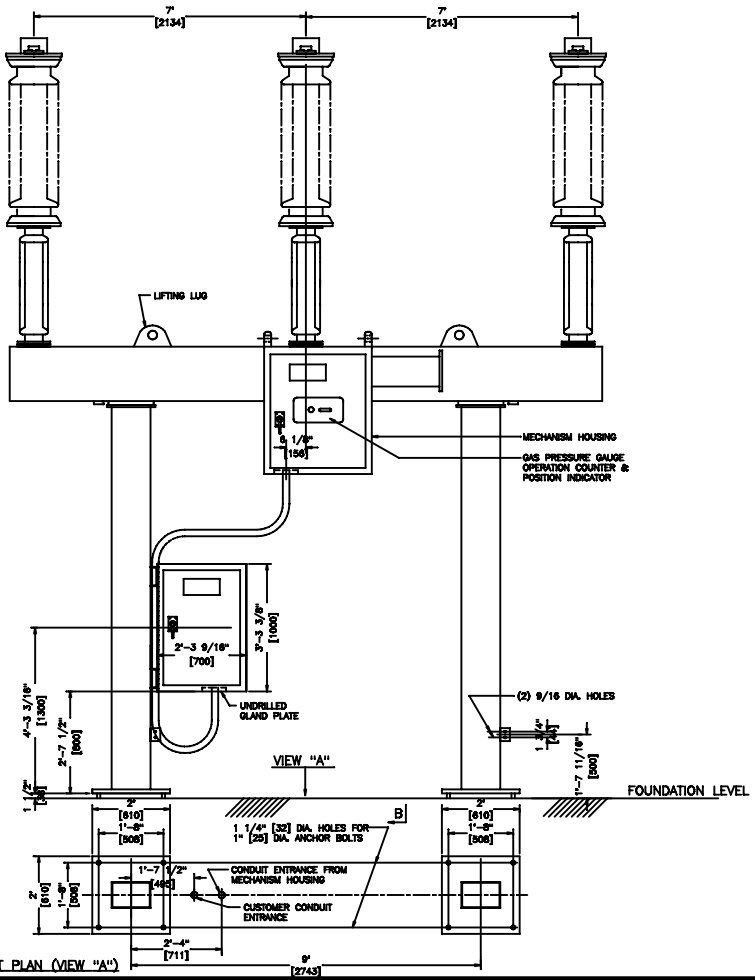


ANCHOR BOLT DETAIL



DIMENSIONS IN INCHES (APPROX.)

A STRUCTURE HEIGHT	B LOWER TERM. PAD HEIGHT	C UPPER TERM. PAD HEIGHT	WEIGHT (PER 3 PHASE)
96 [2438]	151 11/16 [2853]	205 13/16 [5228]	5099 lbs. [2312 kg.]
120 [3048]	175 11/16 [4462]	229 13/16 [5838]	5245 lbs. [2379 kg.]
144 [3658]	199 11/16 [5072]	253 13/16 [6447]	5369 lbs. [3435 kg.]



SECTION B-B

PROPOSAL DRAWING

NOT FOR CONSTRUCTION SPECIFICATIONS SUBJECT TO CHANGE

TERMINAL PAD LOADING

DIRECTION OF LOAD	LOADING, LBS	LOADING, KG
IN-LINE WITH TERMINAL PADS	281	127
PERPENDICULAR TO TERMINAL PADS	168	76
VERTICAL TO TERMINAL PADS	225	102

THIS DRAWING AND THE INFORMATION HEREIN ARE THE PROPERTY OF SOUTHERN STATES, LLC AND ARE PROVIDED FOR THE EXCLUSIVE USE OF OUR CUSTOMERS, SUPPLIERS AND LICENSEES. THE DRAWING OR INFORMATION IS NOT TO BE REPRODUCED OR COPIED BY ANY OTHER PARTY WITHOUT THE SPECIFIC WRITTEN APPROVAL OF SOUTHERN STATES, LLC.

Southern States, LLC

PROPOSAL OUTLINE  
CSV 72.5 kV  
84" PHASE SPACING

DATE	7/21/06	CAD	APPROVAL
DESIGN			
CHECKED			
DATE			
SHEET NO.	1	OF	
PROJECT	PD-CMV 72.5 KV_84 PH		