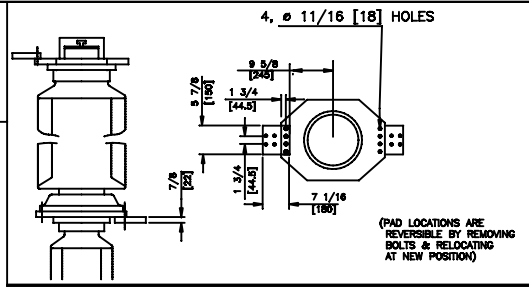
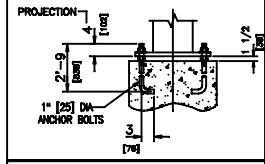


NOTE:- CLEAN BOTH CONNECTING SURFACES OF TERMINAL PADS AND TERMINAL FLANGE WITH SAND PAPER AND COAT SUPPLIED COMPOUND BEFORE CONNECTING.

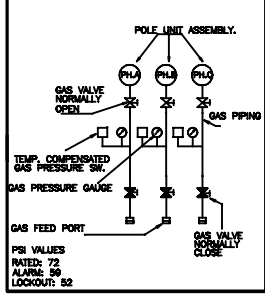


DETAIL OF UPPER AND LOWER TERMINAL PADS



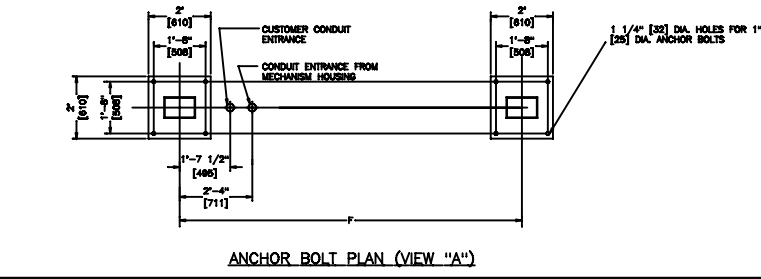
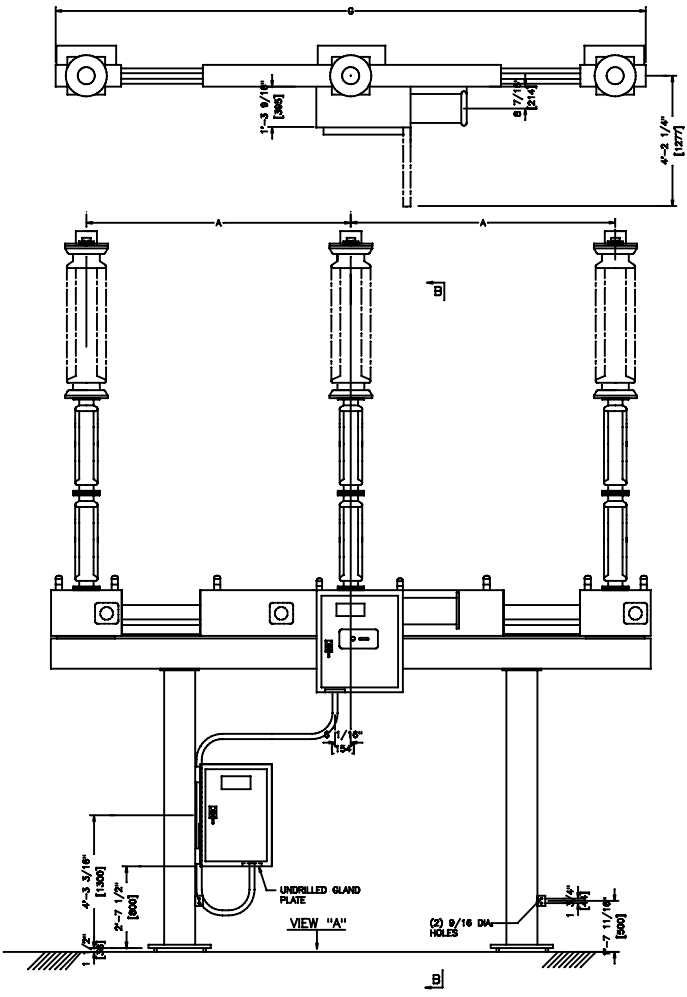
ANCHOR BOLT DETAIL

SF6 GAS SCHEMATIC DIAGRAM



DIMENSIONS IN INCHES (APPROX.)

A PHASE SPACING	B STRUCTURE HEIGHT	C LOWER TERM. PAD HEIGHT	D UPPER TERM. PAD HEIGHT	E COLUMN HEIGHT	F COLUMN SPACING	G WIDTH OF BUSE FRAME	WEIGHT (PER 3 PHASE)
96 [2438]	96 [2438]	184 3/4 [4692]	222 7/16 [5650]	84 3/8 [2143]	120 [3048]	215 5/8 [2477]	5548 lbs. [2516 kg.]
96 [2438]	96 [2438]	184 3/4 [4692]	222 7/16 [5650]	84 3/8 [2143]	132 [3353]	215 5/8 [2477]	5548 lbs. [2516 kg.]
96 [2438]	120 [3048]	212 3/4 [5403]	246 7/16 [6260]	108 3/8 [2753]	120 [3048]	215 5/8 [2477]	6678 lbs. [3029 kg.]
96 [2438]	120 [3048]	212 3/4 [5403]	246 7/16 [6260]	108 3/8 [2753]	132 [3353]	215 5/8 [2477]	6678 lbs. [3029 kg.]
96 [2438]	144 [3658]	236 3/4 [6013]	270 7/16 [6869]	132 3/8 [3362]	120 [3048]	215 5/8 [2477]	6872 lbs. [3117 kg.]
96 [2438]	144 [3658]	236 3/4 [6013]	270 7/16 [6869]	132 3/8 [3362]	132 [3353]	215 5/8 [2477]	6872 lbs. [3117 kg.]
102 [2438]	96 [2438]	184 3/4 [4692]	222 7/16 [5650]	84 3/8 [2143]	120 [3048]	227 5/8 [5782]	5548 lbs. [2516 kg.]
102 [3048]	96 [2438]	184 3/4 [4692]	222 7/16 [5650]	84 3/8 [2143]	132 [3353]	227 5/8 [5782]	5548 lbs. [2516 kg.]
102 [2438]	120 [3048]	212 3/4 [5403]	246 7/16 [6260]	108 3/8 [2753]	120 [3048]	227 5/8 [5782]	6678 lbs. [3029 kg.]
102 [2438]	120 [3048]	212 3/4 [5403]	246 7/16 [6260]	108 3/8 [2753]	132 [3353]	227 5/8 [5782]	6678 lbs. [3029 kg.]
102 [2438]	144 [3658]	236 3/4 [6013]	270 7/16 [6869]	132 3/8 [3362]	120 [3048]	227 5/8 [5782]	6872 lbs. [3117 kg.]
102 [2438]	144 [3658]	236 3/4 [6013]	270 7/16 [6869]	132 3/8 [3362]	132 [3353]	227 5/8 [5782]	6872 lbs. [3117 kg.]
120 [2438]	96 [2438]	184 3/4 [4692]	222 7/16 [5650]	84 3/8 [2143]	120 [3048]	264 [6706]	5548 lbs. [2516 kg.]
120 [3048]	96 [2438]	184 3/4 [4692]	222 7/16 [5650]	84 3/8 [2143]	132 [3353]	264 [6706]	5548 lbs. [2516 kg.]
120 [2438]	120 [3048]	212 3/4 [5403]	246 7/16 [6260]	108 3/8 [2753]	120 [3048]	264 [6706]	6678 lbs. [3029 kg.]
120 [2438]	120 [3048]	212 3/4 [5403]	246 7/16 [6260]	108 3/8 [2753]	132 [3353]	264 [6706]	6678 lbs. [3029 kg.]
120 [2438]	144 [3658]	236 3/4 [6013]	270 7/16 [6869]	132 3/8 [3362]	120 [3048]	264 [6706]	6872 lbs. [3117 kg.]
120 [2438]	144 [3658]	236 3/4 [6013]	270 7/16 [6869]	132 3/8 [3362]	132 [3353]	264 [6706]	6872 lbs. [3117 kg.]



PROPOSAL DRAWING

NOT FOR CONSTRUCTION SPECIFICATIONS SUBJECT TO CHANGE

TERMINAL PAD LOADING

DIRECTION OF LOAD	LOADING, LBS	LOADING, KG
IN-LINE WITH TERMINAL PADS	281	127
PERPENDICULAR TO TERMINAL PADS	168	76
VERTICAL TO TERMINAL PADS	225	102

Southern States, LLC

2000 W. 10th Street, Suite 200
Tulsa, Oklahoma 74104
Tel: (918) 482-3300

PROPOSAL OUTLINE
CSV 161-169 kV
96"-120" PHASE SPACING

1/25 SCALE (40 A4 -40C)

DATE: 6/18/07 PVP

REVISION: 1 OF 1

PROJECT: PD-CSV 161-169 kV-96-120 PH

THIS DRAWING AND THE INFORMATION HEREIN ARE THE PROPERTY OF SOUTHERN STATES, LLC AND ARE PROVIDED FOR THE EXCLUSIVE USE OF OUR CUSTOMERS. ANY REPRODUCTION, ALTERATION, OR DISTRIBUTION OF THIS DRAWING OR INFORMATION HEREIN WITHOUT THE WRITTEN APPROVAL OF SOUTHERN STATES, LLC IS STRICTLY PROHIBITED.