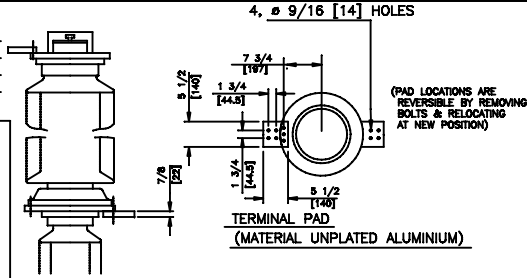
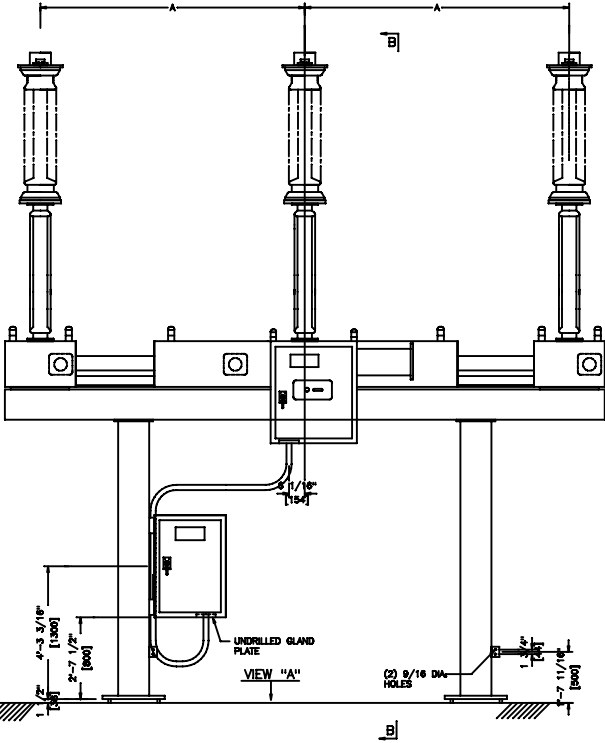


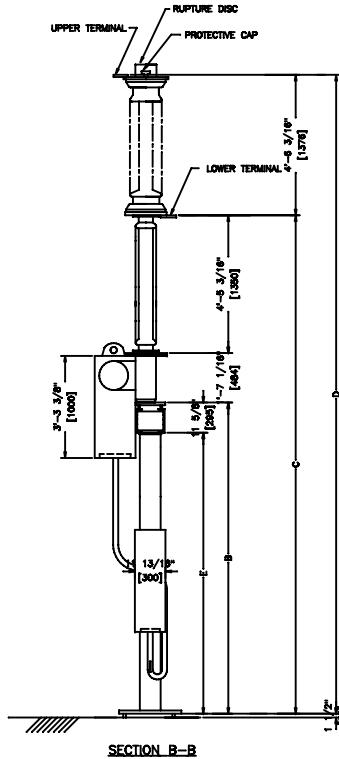
NOTE:- CLEAN BOTH CONNECTING SURFACES OF TERMINAL PADS AND TERMINAL FLANGE WITH SAND PAPER AND COAT SUPPLIED COMPOUND BEFORE CONNECTING.



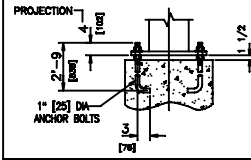
DETAIL OF UPPER AND LOWER TERMINAL PADS



ANCHOR BOLT PLAN (VIEW "A")

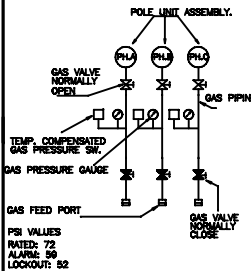


SECTION B-B



ANCHOR BOLT DETAIL

SF6 GAS SCHEMATIC DIAGRAM



DIMENSIONS IN INCHES (APPROX.)

| A<br>PHASE<br>SPACING | B<br>STRUCTURE<br>HEIGHT | C<br>LOWER<br>TERMINAL<br>PAD<br>HEIGHT | D<br>UPPER<br>TERMINAL<br>PAD<br>HEIGHT | E<br>COLUMN<br>HEIGHT | F<br>COLUMN<br>SPACING | G<br>WIDTH OF<br>BASE<br>FRAME | WEIGHT<br>(PER 3 PHASE) |
|-----------------------|--------------------------|---|---|-----------------------|------------------------|--------------------------------|-------------------------|
| 96<br>[2438]          | 96<br>[2438]             | 168 1/4<br>[4172]                       | 222 7/16<br>[5650]                      | 84 3/8<br>[2143]      | 120<br>[3048]          | 215 5/8<br>[2477]              | 5438 lbs.<br>[2466 kg.] |
| 96<br>[2438]          | 96<br>[2438]             | 168 1/4<br>[4172]                       | 222 7/16<br>[5650]                      | 84 3/8<br>[2143]      | 132<br>[3353]          | 215 5/8<br>[2477]              | 5438 lbs.<br>[2466 kg.] |
| 96<br>[2438]          | 120<br>[3048]            | 192 1/4<br>[4883]                       | 246 7/16<br>[6260]                      | 108 3/8<br>[2753]     | 120<br>[3048]          | 215 5/8<br>[2477]              | 6568 lbs.<br>[2979 kg.] |
| 96<br>[2438]          | 120<br>[3048]            | 192 1/4<br>[4883]                       | 246 7/16<br>[6260]                      | 108 3/8<br>[2753]     | 132<br>[3353]          | 215 5/8<br>[2477]              | 6568 lbs.<br>[2979 kg.] |
| 96<br>[2438]          | 144<br>[3658]            | 216 1/4<br>[5493]                       | 270 7/16<br>[6869]                      | 132 3/8<br>[3362]     | 120<br>[3048]          | 215 5/8<br>[2477]              | 6762 lbs.<br>[3067 kg.] |
| 96<br>[2438]          | 144<br>[3658]            | 216 1/4<br>[5493]                       | 270 7/16<br>[6869]                      | 132 3/8<br>[3362]     | 132<br>[3353]          | 215 5/8<br>[2477]              | 6762 lbs.<br>[3067 kg.] |
| 102<br>[2438]         | 96<br>[2438]             | 168 1/4<br>[4172]                       | 222 7/16<br>[5650]                      | 84 3/8<br>[2143]      | 120<br>[3048]          | 227 5/8<br>[5782]              | 5438 lbs.<br>[2466 kg.] |
| 102<br>[3048]         | 96<br>[2438]             | 168 1/4<br>[4172]                       | 222 7/16<br>[5650]                      | 84 3/8<br>[2143]      | 132<br>[3353]          | 227 5/8<br>[5782]              | 5438 lbs.<br>[2466 kg.] |
| 102<br>[2438]         | 120<br>[3048]            | 192 1/4<br>[4883]                       | 246 7/16<br>[6260]                      | 108 3/8<br>[2753]     | 120<br>[3048]          | 227 5/8<br>[5782]              | 6568 lbs.<br>[2979 kg.] |
| 102<br>[2438]         | 120<br>[3048]            | 192 1/4<br>[4883]                       | 246 7/16<br>[6260]                      | 108 3/8<br>[2753]     | 132<br>[3353]          | 227 5/8<br>[5782]              | 6568 lbs.<br>[2979 kg.] |
| 102<br>[2438]         | 144<br>[3658]            | 216 1/4<br>[5493]                       | 270 7/16<br>[6869]                      | 132 3/8<br>[3362]     | 120<br>[3048]          | 227 5/8<br>[5782]              | 6762 lbs.<br>[3067 kg.] |
| 102<br>[2438]         | 144<br>[3658]            | 216 1/4<br>[5493]                       | 270 7/16<br>[6869]                      | 132 3/8<br>[3362]     | 132<br>[3353]          | 227 5/8<br>[5782]              | 6762 lbs.<br>[3067 kg.] |
| 120<br>[2438]         | 96<br>[2438]             | 168 1/4<br>[4172]                       | 222 7/16<br>[5650]                      | 84 3/8<br>[2143]      | 120<br>[3048]          | 264<br>[6706]                  | 5438 lbs.<br>[2466 kg.] |
| 120<br>[3048]         | 96<br>[2438]             | 168 1/4<br>[4172]                       | 222 7/16<br>[5650]                      | 84 3/8<br>[2143]      | 132<br>[3353]          | 264<br>[6706]                  | 5438 lbs.<br>[2466 kg.] |
| 120<br>[2438]         | 120<br>[3048]            | 192 1/4<br>[4883]                       | 246 7/16<br>[6260]                      | 108 3/8<br>[2753]     | 120<br>[3048]          | 264<br>[6706]                  | 6568 lbs.<br>[2979 kg.] |
| 120<br>[2438]         | 120<br>[3048]            | 192 1/4<br>[4883]                       | 246 7/16<br>[6260]                      | 108 3/8<br>[2753]     | 132<br>[3353]          | 264<br>[6706]                  | 6568 lbs.<br>[2979 kg.] |
| 120<br>[2438]         | 144<br>[3658]            | 216 1/4<br>[5493]                       | 270 7/16<br>[6869]                      | 132 3/8<br>[3362]     | 120<br>[3048]          | 264<br>[6706]                  | 6762 lbs.<br>[3067 kg.] |
| 120<br>[2438]         | 144<br>[3658]            | 216 1/4<br>[5493]                       | 270 7/16<br>[6869]                      | 132 3/8<br>[3362]     | 132<br>[3353]          | 264<br>[6706]                  | 6762 lbs.<br>[3067 kg.] |

TERMINAL PAD LOADING

| DIRECTION OF LOAD              | LOADING, LBS | LOADING, KG |
|--------------------------------|--------------|-------------|
| IN-LINE WITH TERMINAL PADS     | 281          | 127         |
| PERPENDICULAR TO TERMINAL PADS | 166          | 75          |
| VERTICAL TO TERMINAL PADS      | 225          | 102         |

PROPOSAL DRAWING

NOT FOR CONSTRUCTION SPECIFICATIONS SUBJECT TO CHANGE

Southern States, LLC

PROPOSAL OUTLINE  
CSV 121-145 kV  
96"-120" PHASE SPACING

1/25 SCALE (40 A4 -40C)

DATE: 7/21/06 CAD: [blank] CHECKED: [blank]

DESIGNED: [blank] SHEET NO. 1 OF [blank] ISSUED: [blank]

PROJECT: [blank] FILE: [blank] PD-CSV 121-145 kV-96-120 PH

THIS DRAWING AND THE INFORMATION HEREON ARE THE PROPERTY OF SOUTHERN STATES, LLC AND ARE PROVIDED FOR THE EXCLUSIVE USE OF OUR CUSTOMERS. ANY REPRODUCTION, MODIFICATION, OR DISTRIBUTION OF THIS DRAWING OR INFORMATION HEREON WITHOUT THE WRITTEN APPROVAL OF SOUTHERN STATES, LLC IS PROHIBITED.