

# Type P

Air Break Switch

## The Southern States, Cole Type P.

Cole type P center side break switch is available in ratings from 38 kV through 245 kV and from 2000 A through 5000 A. It is ideal for high current applications at medium and high voltages.

### BENEFITS

- Meets all ANSI & NEMA standards
- Easy and fast installation and adjustment
- Maximum versatility (upright, vertical, or underhung mounting)
- All contacts are proven highly reliable and trouble-free in corrosive environments
- Long life switch with low maintenance effort

### SPECIFICATIONS

**Maximum Voltage Rating**

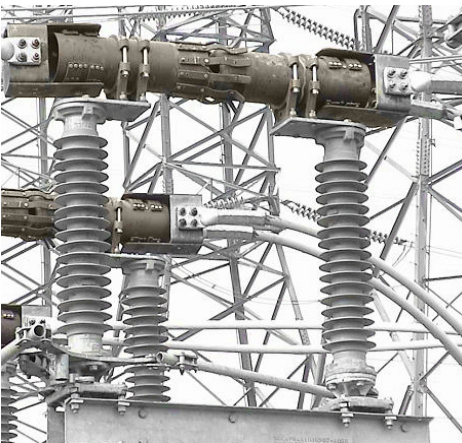
38 kV – 245 kV

**Continuous Current Rating**

2000 A – 5000 A

# Type P

AirBreak Switch



## RATINGS

Maximum Voltage Rating (kV)						
38	48.3	72.5	123	145	170	245
BIL (kV)						
200	250	350	550	650	750	900/ 1050

## ADDITIONAL RATINGS

Rated Power Frequency	60 Hz	
Continuous Current	2000 A -1500 A	3000 A - 5000 A
Short-Time Symmetrical Withstand (3 Sec)	63 kA RMS Standard	80 kA RMS Optional
Peak Withstand	164 kA	208 kA
Ambient Temperature Rating	-40°C to +50° Standard -50°C Optional	

## KEY FEATURES

- Hinge contacts are multiple contact point, silver-to-silver designs of great durability
- Both blade members are made from high-conductivity, hard-drawn copper tube
- All terminal pads have 4-hole NEMA drilling
- Bases are fabricated from structural steel shapes and are hot dip galvanized
- All control handles are designed for padlocking in both the “open” and “closed” positions

### Additional Applications

- Line disconnecting
- Line sectionalizing
- Isolation of other substation equipments (circuit breakers, circuit switchers, power transformers, etc)
- Bypassing other substation equipment
- Bus tie positions
- Magnetizing current interrupting (when furnished with appropriate arcing horns)