

The PBO and PBO-1 hookstick switches have been proven outstanding and trouble-free performers in installations all over the country, and although expressly designed for substation use, these switches also are often used on wood poles in distribution circuits where utmost reliability is required. All models either meet or exceed all ANSI standards.

Type PBO (600 amp.) - Designed to 30° temperature rise standards, the PBO 600 amp. is available in voltage ratings from 8.25 kV through 169 kV (max).

Type PBO (1200 amp.) - Also a 30° temperature rise switch - in voltage ratings from 48.3 kV through 169 kV (max).

Type PBO-1 (1200 amp.) - Conforming to current ANSI standards, the PBO-1 1200 amp. is available in voltage ratings from 8.25 kV through 38 kV (max).

All models in the PBO/PBO-1 line have a positive blade latch that prevents them from coming open due to fault current blowout or vibration. The blade can be opened only by a lineman pulling on the operating eye with a hookstick. Operator effort is kept very low by the powerful "pry-out" leverage of the operating eye on the latching mechanism.



FIGURE 2

Except for its special base and live part adaptors this popular "vee" design is identical to all other PBO switches. The PBO and PBO-1-V are available from 7.5 through 69 kV (nom), and currents of 600 and 1200 continuous amperes. (Refer to the factory for dimensions and weights.)

Disconnect Switches Hookstick Operated

8.25 - 169kV; 600 and 1200 Amp.

Types PBO and PBO-1

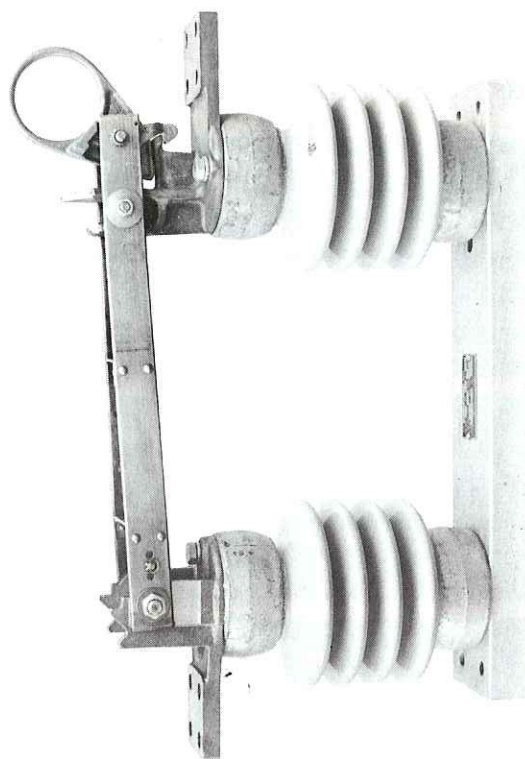


FIGURE 1 - PBO-1 14.4 kV, 1200 Amp.

SEE SSI CATALOG BULLETIN 602 FOR HOOKSTICK
SWITCHES 2000 AMP. AND ABOVE.

**HIGH VOLTAGE
SWITCHMAKERS**



Southern States, Inc.



Operating Eye and Latch Mechanism - Cast bronze. The lineman's pull is multiplied via favorable leverage on a cam action mechanism, prying the blade out with low effort. Stainless steel springs control the latch components, and the entire assembly is maintenance-free and never needs adjustment.

Hinge and Jaw Construction - One piece, cast bronze. The terminal pad is an integral part of the casting. No bolted or welded joints.

Switch Blade - Hard drawn bus copper. The switch blade is a trussed assembly with widely spaced hinge pivots. It is rigid and highly resistant to deflection from side thrusts, making it easy for the operator to slam it closed from positions well to either side of the switch.

Blade Stops - are 90°, 135°, or 180° open as specified. On voltage ratings 115 kV and above, blade open stops are standard 90° open unless otherwise specified. Through 69 kV, blade stops are easily changed in the field.

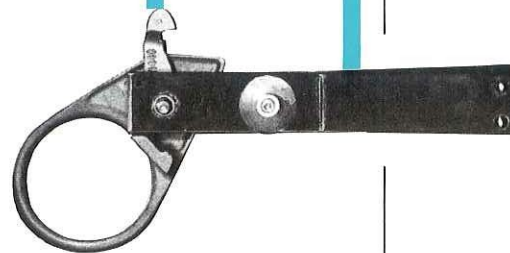
Contacts (Jaw) - Multiple line, high pressure, self-cleaning; maintenance and adjustment-free. Pressure is supplied by Belleville spring washers on all models.

	STANDARD	OPTIONAL
600 amp.	copper-to-copper	silver-to-silver
600 amp. 115 kV and above	silver-to-silver	—
1200 amp.	copper-to-silver	silver-to-silver
1200 amp. 115 kV and above	silver-to-silver	—

Contacts (Hinge) - High pressure, self-cleaning, maintenance and adjustment free. Belleville spring washers supply contact pressure on all models.

	STANDARD	OPTIONAL
600 amp.	copper-to-copper	silver-to-silver
1200 amp.	copper-to-copper	silver-to-silver
1200 amp. 115 kV and above	silver-to-silver	—

Insulators - NEMA standard post unless otherwise specified.





Bases - The standard base is a galvanized steel, single channel, through 69 kV. Double channel bases are used on 115 kV and above. Standard drilling is listed on page 4. Special bases and drillings can be supplied as an extra-cost option.

Terminal Pads - NEMA standard drillings for 1/2" bolts. Special drillings and/or tinned terminal pads can be supplied upon specification.*

Terminal connectors (specify type) also can be supplied upon specification.*

*Extra cost options.

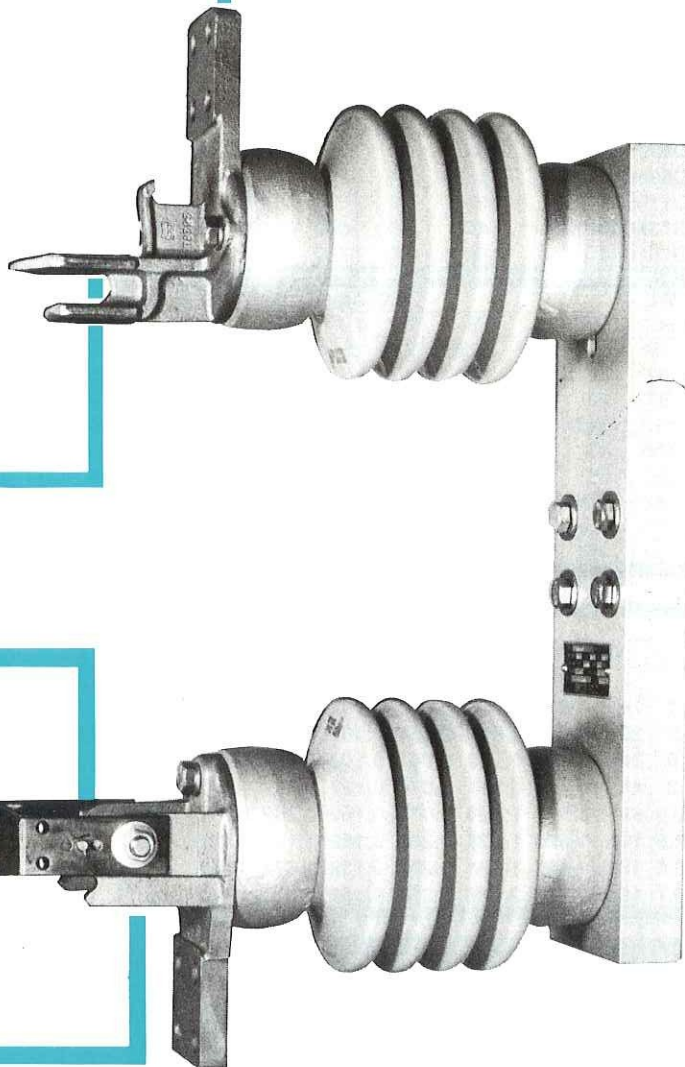


Figure 3 - PBO-1 14.4 kV, 1200 Amp.

ORDERING INFORMATION

To facilitate prompt response to your inquiry, please include the following information:

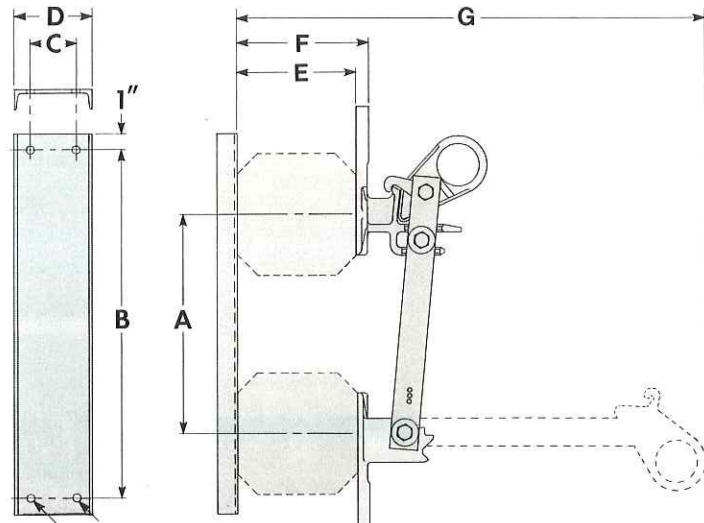
- Voltage
- Continuous and momentary
- BIL level
- Open position stop
- Silver-to-silver contacts (see page 2)
- Tinned terminal pads
- Connectors (specify type)
- Any special specification



Southern
States, Inc.

Types
PBO and PBO-1

Page 4



Bolt holes: 9/16" through 34.5 kV; 11/16" all above (.014M and .017M)

600 Continuous Amperes						1200 Continuous Amperes					
kV Nom.	kV Max.	AMP. Mom. kA	BIL kV	TR** No.	Catalog Number	kV Nom.	kV Max.	Amp Mom. kA	BIL kV	TR** No.	Catalog Number
7.2	8.3	40	95	202	PBO75600	7.2	8.3	61	95	202	PBO-1751200
14.4	15.5	40	110	205	PBO15600	14.4	15.5	61	110	205	PBO-1151200
23	25.8	40	150	208	PBO23600	23	25.8	61	150	208	PBO-1231200
34.5	38.0	40	200	210	PBO34600	34.5	38.0	61	200	210	PBO-1341200
46	48.3	40	250	214	PBO46600	46	48.3	61	250	214	PBO- 461200
69	75.2	40	350	216	PBO69600	69	75.2	61	350	216	PBO- 691200
115	121	40	550	286	PBO115600	115	121	40	550	286	PBO-1151200
138	145	40	650	288	PBO138600	138	145	40	650	288	PBO-1381200
161	169	40	725	291	PBO161600	161	169	40	750	291	PBO-1611200

600 Amp Dimensions (Inches)								Wt.	1200 Amp Dimensions (Inches)								Wt.
kV	A	B	C	D	E	F	G	Lb.	kV	A	B	C	D	E	F	G	Lb.
7.2	12	18	2	4	7 1/2	8	26 1/4	51	7.2	12	18	2	5	7 1/2	8 1/8	30 7/8	59
14.4	15	21	2	4	10	10 1/2	31 3/4	62	14.4	15	21	2	5	10	10 5/8	36 3/8	70
23	18	24	2	4	14	14 1/2	38 3/4	87	23	18	24	2	5	14	14 5/8	43 3/8	96
34.5	24	30	2	5	18	18 1/2	48 3/4	112	34.5	24	30	2	5	18	18 5/8	53 3/8	123
46	30	39	3	5	22	22 1/2	58 3/4	155	46	30	39	3	5	22	22 5/8	63 3/8	173
69	42	51	3	6	30	30 1/2	78 3/4	266	69	42	51	3	6	30	30 5/8	83 3/8	271
115	60	66	8 1/4	6*	45	47 3/8	116 1/4	546	115	60	66	8 1/4	6*	45	47 5/8	118 3/8	568
138	72	78	8 1/4	6*	54	56 3/8	137 1/4	645	138	72	78	8 1/4	6*	54	56 5/8	139 1/4	667
161	84	90	8 1/4	6*	62	64 3/8	157 1/4	727	161	84	90	8 1/4	6*	62	64 5/8	159 3/4	750

*Double channel base

600 Amp Dimensions (Meters)								Wt.	1200 Amp Dimensions (Meters)								Wt.
kV	A	B	C	D	E	F	G	kg.	kV	A	B	C	D	E	F	G	kg.
7.2	0.305	0.457	0.051	0.102	0.191	0.203	0.667	23.1	7.2	0.305	0.457	0.051	0.102	0.191	0.206	0.784	29.0
14.4	0.381	0.533	0.051	0.102	0.254	0.267	0.806	28.1	14.4	0.381	0.533	0.051	0.102	0.254	0.270	0.924	34.0
23	0.457	0.610	0.051	0.102	0.356	0.368	0.984	39.5	23	0.457	0.610	0.051	0.102	0.356	0.371	1.102	45.8
34.5	0.610	0.762	0.051	0.102	0.457	0.470	1.238	50.8	34.5	0.610	0.762	0.051	0.102	0.457	0.473	1.356	59.0
46	0.762	0.991	0.076	0.127	0.559	0.572	1.492	70.3	46	0.762	0.991	0.076	0.127	0.559	0.575	1.610	78.5
69	1.067	1.295	0.076	0.152	0.762	0.775	2.000	120.6	69	1.067	1.295	0.076	0.152	0.762	0.778	2.118	122.9
115	1.524	1.676	0.208	0.152*	1.143	1.203	2.953	247.6	115	1.524	1.676	0.208	0.152*1.143	1.210	3.016	257.6	
138	1.829	1.981	0.208	0.152*	1.372	1.432	3.486	292.5	138	1.829	1.981	0.208	0.152*1.372	1.438	3.550	302.5	
161	2.134	2.286	0.208	0.152*	1.575	1.635	3.994	329.7	161	2.134	2.286	0.208	0.152*1.575	1.641	4.058	340.1	



Southern
States, Inc.

30 Georgia Avenue
Hampton, Georgia 30228
770-946-4562 Telephone
770-946-8106 Fax

The quality name in high voltage products