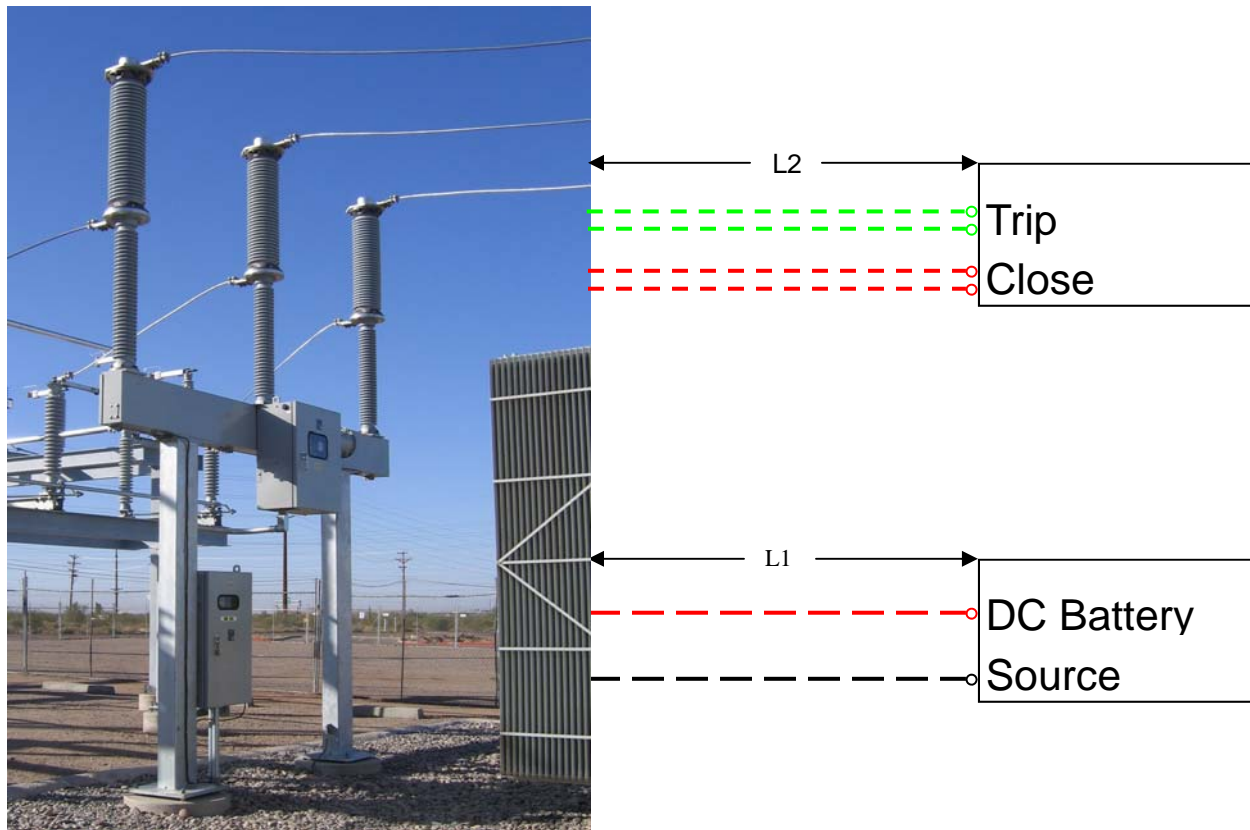


Southern States CSV Circuit Switcher Minimum Control Wire Size Recommendations



Source Supply Voltage	Motor Running Current	Trip Coil Current	Close Coil Current	Minimum Size of Control Wire for Lines L ₁ and L ₂ Respectively								
					Distance Required (Feet)							
					100	200	300	400	500	1000	2000	3000
48 VDC	16 A	16.8 A (33.6 A) ¹	9.7 A	L ₁	6	4	2	1	1/0	4/0	N/A	N/A
				L ₂	12	10	8	6	6	2	N/A	N/A
125 VDC	8 A	5.2 A (10.4 A) ¹	5.2 A	L ₁	12	10	8	6	6	3	1/0	3/0
				L ₂	12	12	12	12	10	8	6	4
250 VDC	5 A	3.4 A (6.8 A) ¹	2.4 A	L ₁	12	10	8	6	6	3	1/0	3/0
				L ₂	12	12	12	12	10	8	6	4
120 VAC	8 A	--	--	L ₁	12	10	8	6	6	3	1/0	3/0
240 VAC	5 A	--	--	L ₁	12	10	8	6	6	3	1/0	3/0

¹ The bracketed values are total current draw by dual trip coils (Dual trip coils are standard on the CSV.)