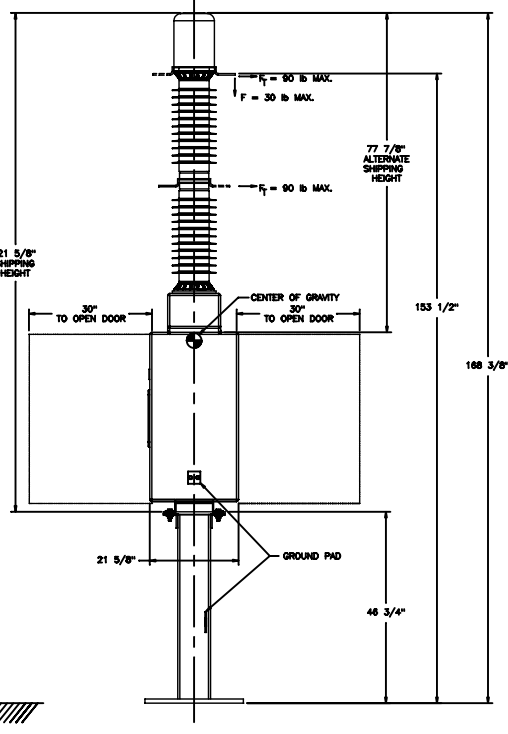
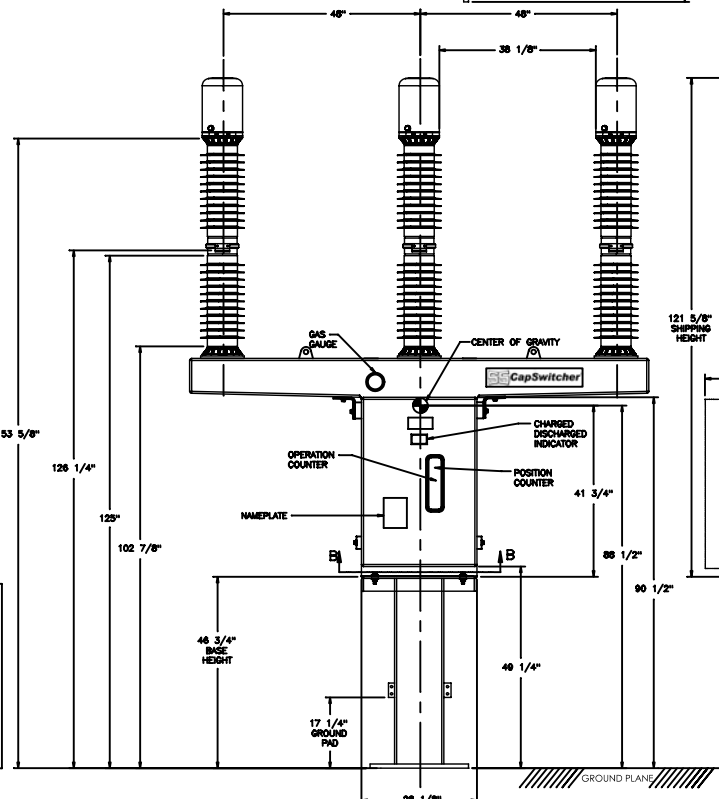
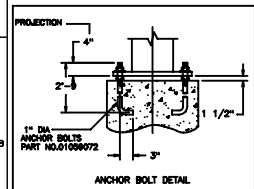
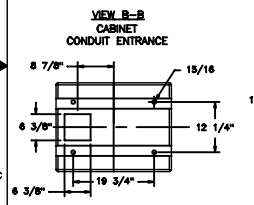
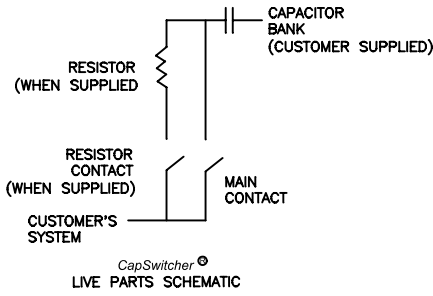
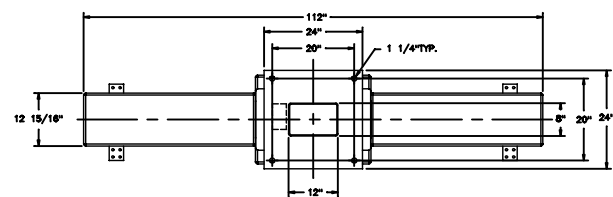


PAD LOCATIONS ARE REVERSIBLE BY REMOVING BOLTS & RELOCATING AT NEW POSITION.
 TERMINAL PAD MATERIAL IS UNPLATED ALUMINUM.



RATED MAXIMUM VOLTAGE	38 kV	48.3 kV	72.5 kV
RATED POWER FREQUENCY WITHSTAND VOLTAGE	80 kV	105 kV	160 kV
RATED LIGHTNING IMPULSE WITHSTAND VOLTAGE (BIL)	200 kV	250 kV	350 kV
RATED FREQUENCY	50/60 Hz		
RATED CONTINUOUS CURRENT	600 A		
RATED SHORT-TIME WITHSTAND CURRENT	40 kA / 3 SEC.		
RATED PEAK WITHSTAND CURRENT	104 kA PEAK, 1 SEC.		
RATED SHORT CIRCUIT INTERRUPTING CURRENT	25 kA		
RATED INTERRUPTING TIME	5 CYCLES		
RATED DUTY CYCLE	0 - 5 MIN - CO - 5 MIN - CO		
INTERRUPTER INSULATOR (STANDARD CREEP)	STRIKE -22.63" (575) CREEP - 51.1" (1298)		
INTERRUPTER INSULATOR (HIGH CREEP)	STRIKE -23.23" (590) CREEP - 72.5" (1842)		
CAPACITOR SWITCHING RATINGS			
SHUNT CAPACITOR BANK SWITCHING CURRENT	600 A		
BACK TO BACK CAPACITOR BANK BREAKING CURRENT	600 A		
PEAK CAPACITIVE INRUSH CURRENT	4630 Hz 20 kA		
RESISTOR VALUE	8, 20, 40 & 80 OHMS		
AMBIENT TEMPERATURE RATINGS	STANDARD +50°C TO - 40°C OPTIONAL +50°C TO - 50°C		
GAS FILL PRESSURE	72 PSIG NOM / 52 PSIG MIN		
TOTAL GAS WEIGHT	7 lb (3.1 kg)		
WEIGHT OF COMPLETE UNIT	1500 lbs. (680 kg.)		



FOUNDATION LOADS	
COMPRESSION	3700 lb
TENSION	3870 lb
OVERTURN MOMENT	12,900 ft.lb
BOLT LOADS (MAX.) PER BOLT	
COMPRESSION	932 lb
TENSION	3870 lb
FOUNDATION LOADS BASED ON g=0.2, WIND=100 mph, ICE=3/4"	

NOTE:
SHOWN WITH OPTIONAL CLOSING RESISTOR.

PROPOSAL DRAWING

NOT FOR CONSTRUCTION
 SPECIFICATIONS SUBJECT
 TO CHANGE

DATE: 11/24/02
 DRAWN BY: [Signature]
 CHECKED BY: [Signature]
 APPROVED BY: [Signature]
 TITLE: CapSwitcher
 SCALE: 1:15
 SHEET 1 OF 2

NO.	DESCRIPTION	DATE	BY	REV
1	ISSUED FOR CONSTRUCTION	11/24/02	[Signature]	1
2	ISSUED FOR CONSTRUCTION	11/24/02	[Signature]	2