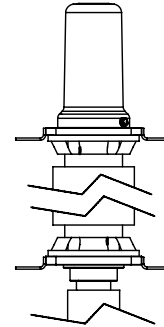
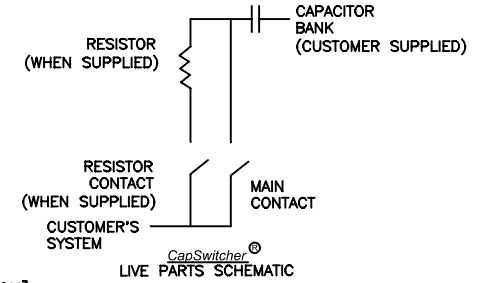


PAD LOCATIONS ARE REVERSIBLE BY REMOVING BOLTS & RELOCATING AT NEW POSITION.

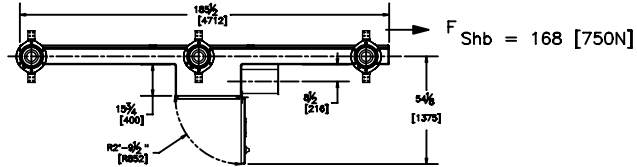
TERMINAL PAD MATERIAL IS UNPLATED ALUMINUM.



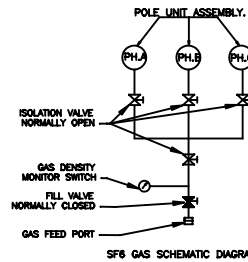
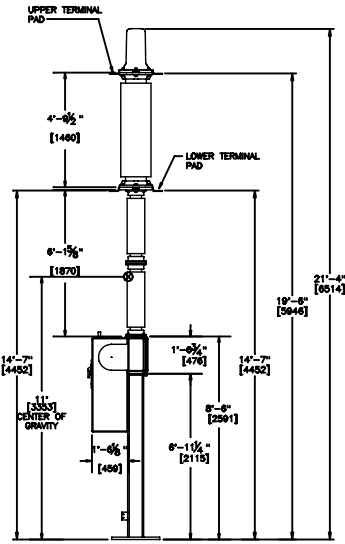
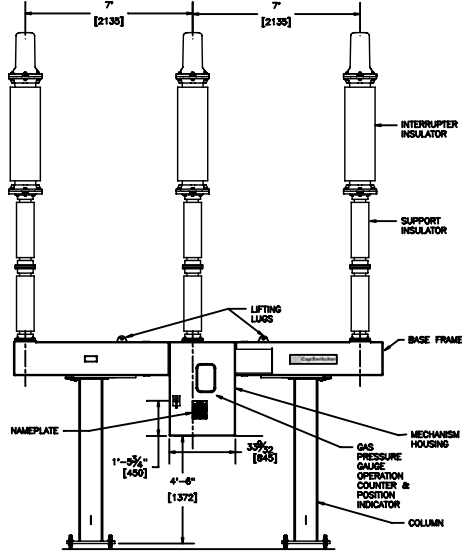
DETAIL OF UPPER AND LOWER TERMINAL PADS



CapSwitcher®
LIVE PARTS SCHEMATIC

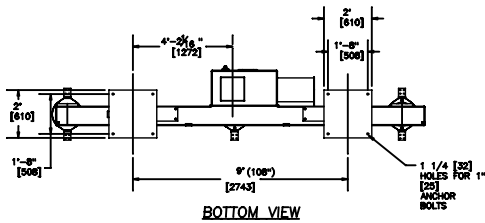


$F_{ShA} = 224 [1000N]$
 $F_{SV} = 168 [750N]$

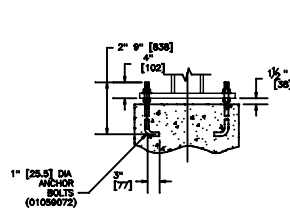


SF6 GAS SCHEMATIC DIAGRAM

RATED MAXIMUM VOLTAGE	170 kV (GROUNDED BANKS ONLY)
RATED POWER FREQUENCY WITHSTAND VOLTAGE	365 kV
RATED LIGHTNING IMPULSE WITHSTAND VOLTAGE (BIL)	750 kV
RATED FREQUENCY	60 Hz
RATED CONTINUOUS CURRENT	650 A
RATED SHORT-TIME WITHSTAND CURRENT (RMS)	40 kA/3 SEC 63kA/18 CYCLES
RATED PEAK WITHSTAND CURRENT	164 kA
RATED SHORT CIRCUIT INTERRUPTING CURRENT	40 kA
RATED INTERRUPTING TIME	3 CYCLES
RATED DUTY CYCLE	0 - 5 MIN - CO - 5 MIN - CO
INTERRUPTER INSULATOR	STRIKE - 51 3/4" (1314) CREEP- 142 3/4" (3625)
SUPPORT INSULATOR	STRIKE - 64 1/2" (1640) CREEP- 178" (4495)
CAPACITOR SWITCHING RATINGS	
SHUNT CAPACITOR BANK SWITCHING CURRENT	650 A
BACK TO BACK CAPACITOR BANK BREAKING CURRENT	650 A
PEAK CAPACITIVE INRUSH CURRENT	20 kA @ 4600 Hz
RESISTOR VALUES AVAILABLE	75, 150 AND 300 OHMS
AMBIENT TEMPERATURE RATINGS	STANDARD +50°C TO - 40°C OPTIONAL +50°C TO - 50°C
GAS FILL PRESSURE	72 PSIG NOM / 52 PSIG MIN
TOTAL GAS WEIGHT	18.7 lb (8.5 kg)



ANCHOR BOLT PLAN (VIEW - "A")



ANCHOR BOLT DETAIL

FOUNDATION LOADS	
COMPRESSION	5974.8 lb
TENSION	111.8 lb
OVERTURNING MOMENT	21449.2 ft.lb
SHEAR	1878 lbs
BOLT LOADS (MAX.) PER BOLT	
COMPRESSION	7167.6 lb
TENSION	5701.9 lb
SHEAR	469.5 lbs
FOUNDATION LOADS BASED ON g=0.2, WIND=100 mph, ICE=3/4"	

PROPOSAL DRAWING

NOT FOR CONSTRUCTION
SPECIFICATIONS SUBJECT
TO CHANGE

NOTE:
SHOWN WITH OPTIONAL CLOSING RESISTOR.

		30 Georgia Avenue Marietta, Georgia 30066-2109 Telephone: 770-946-2582 Fax: 770-946-0109	
		PROPOSAL DRAWING 170kV CapSwitcher®	
DRAWN TRACED CHECKED J.O.	6/16/04 TAD	APPROVED SHEET NO. 1 OF 5	SCALE 1 : 32 SHEETS REV. 1 PD 170 CAP