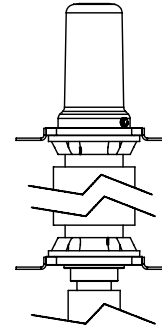


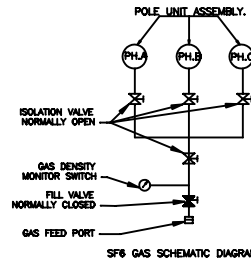
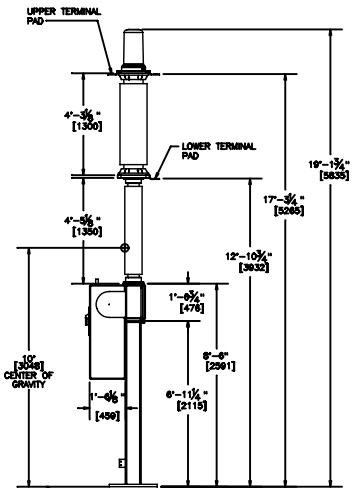
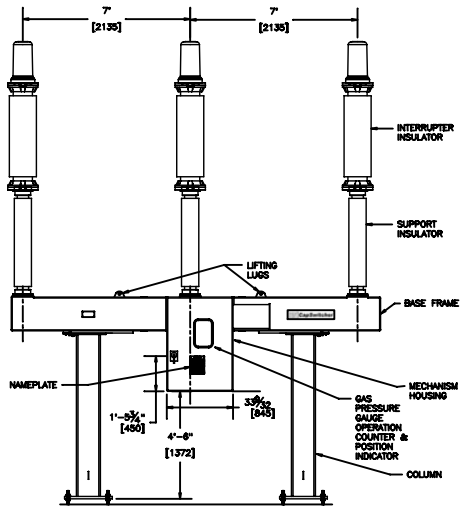
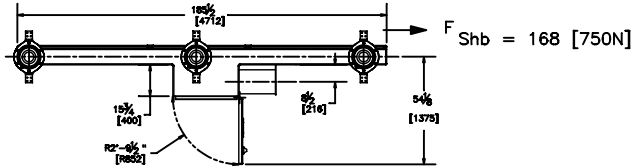
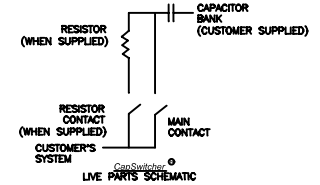
PAD LOCATIONS ARE REVERSIBLE BY REMOVING BOLTS & RELOCATING AT NEW POSITION.

TERMINAL PAD MATERIAL IS UNPLATED ALUMINUM.

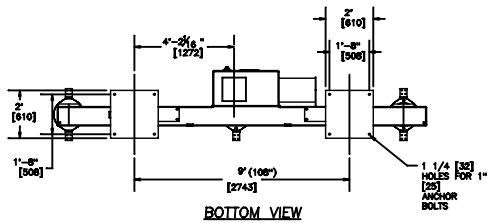


DETAIL OF UPPER AND LOWER TERMINAL PADS

$F_{ShA} = 224 [1000N]$
 $F_{SV} = 168 [750N]$

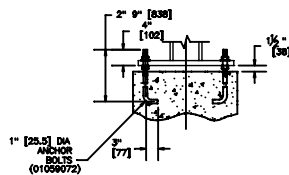


RATED MAXIMUM VOLTAGE	123 kV	145 kV
RATED POWER FREQUENCY WITHSTAND VOLTAGE	260 kV	310 kV
RATED LIGHTNING IMPULSE WITHSTAND VOLTAGE (BIL)	550 kV	650 kV
RATED FREQUENCY	50/60 Hz	
RATED CONTINUOUS CURRENT	650 A	
RATED SHORT-TIME WITHSTAND CURRENT	40 kA/3 SEC	63 kA/18 CYCLES
RATED PEAK WITHSTAND CURRENT	164 kA	
RATED SHORT CIRCUIT INTERRUPTING CURRENT	40 kA	
RATED INTERRUPTING TIME	3 CYCLES	
RATED DUTY CYCLE	0 - 5 MIN - CO - 5 MIN - CO	
INTERRUPTER INSULATOR	STRIKE - 44 7/8" (1138) CREEP - 114" (2900)	
SUPPORT INSULATOR	STRIKE - 48 7/8" (1243) CREEP - 121" (3075)	
CAPACITOR SWITCHING RATINGS		
SHUNT CAPACITOR BANK SWITCHING CURRENT	650 A	
BACK TO BACK CAPACITOR BANK BREAKING CURRENT	650 A	
PEAK CAPACITIVE INRUSH CURRENT	20 kA @ 4600 Hz	
RESISTOR VALUES AVAILABLE	37.5, 75, 150 AND 300 OHMS	
AMBIENT TEMPERATURE RATINGS	STANDARD +50°C TO -40°C OPTIONAL +50°C TO -50°C	
GAS FILL PRESSURE	72 PSIG NOM / 52 PSIG MIN	
TOTAL GAS WEIGHT	17.6 lb (8.0 kg)	



BOTTOM VIEW

ANCHOR BOLT PLAN (VIEW - "A")



ANCHOR BOLT DETAIL

FOUNDATION LOADS	
COMPRESSION	5250 lb
TENSION	650 lb
OVERTURNING MOMENT	18,500 ft.lb
BOLT LOADS (MAX.) PER BOLT	
COMPRESSION	6100 lb
TENSION	4900 lb
FOUNDATION LOADS BASED ON g=0.2, WIND=100 mph, ICE=3/4"	

PROPOSAL DRAWING

NOT FOR CONSTRUCTION
SPECIFICATIONS SUBJECT
TO CHANGE

NOTE: DIMENSIONS SHOWN IN " [] " ARE IN MILLIMETERS. OTHER DIMENSIONS ARE IN FEET AND INCHES.

NOTE:
SHOWN WITH OPTIONAL CLOSING RESISTOR.

		30 Georgia Avenue Marietta, Georgia 30066-2109 Telephone: 770-946-2582 Fax: 770-946-0109	
		PROPOSAL DRAWING 123kV/145kV CapSwitcher®	
DRAWN TRACED CHECKED J.O. P.A.	6/16/04 TAD	APPROVED SHEET NO. 1 OF 5 SHEETS PD 145 CAP	SCALE 1 : 32 REV. 1