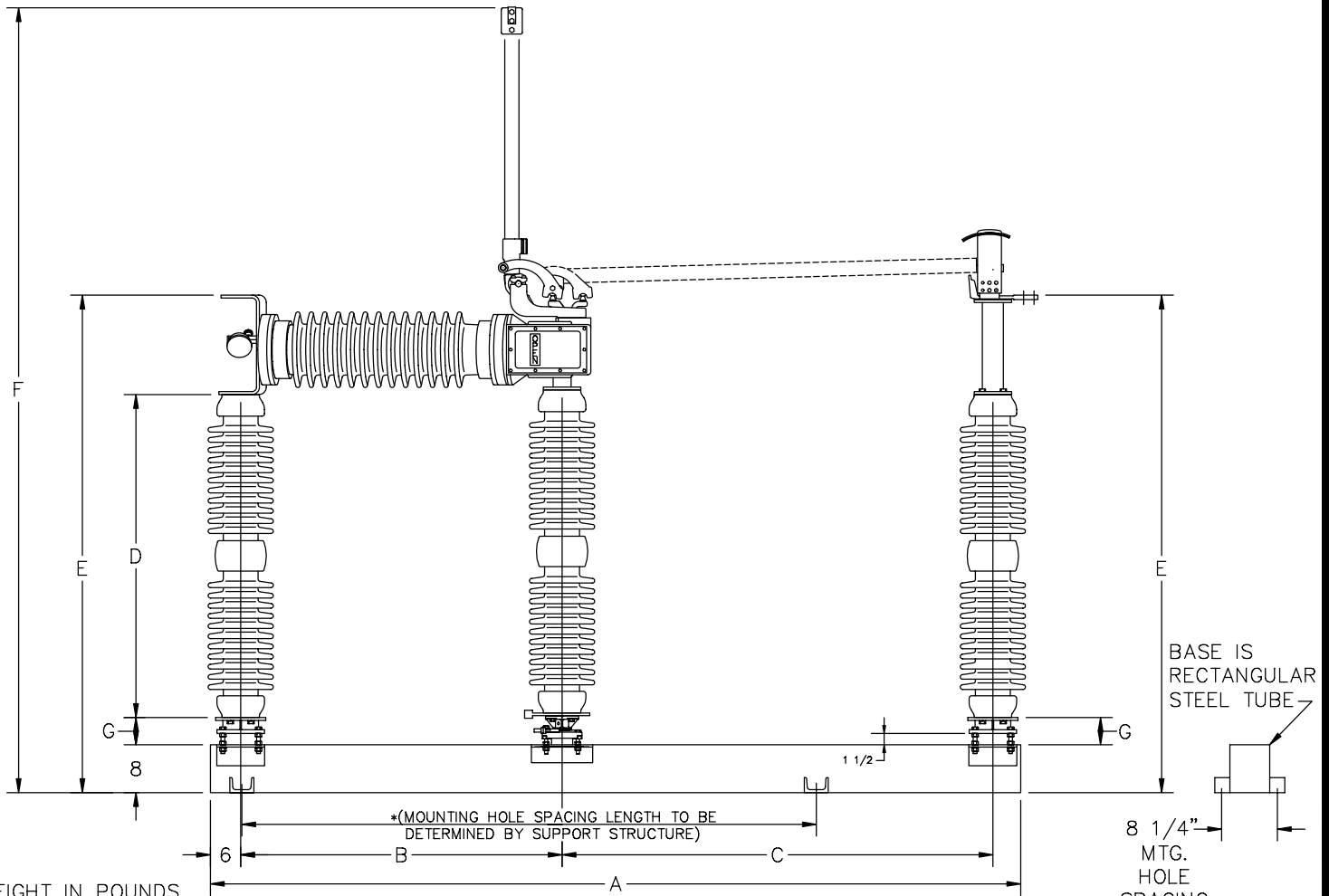
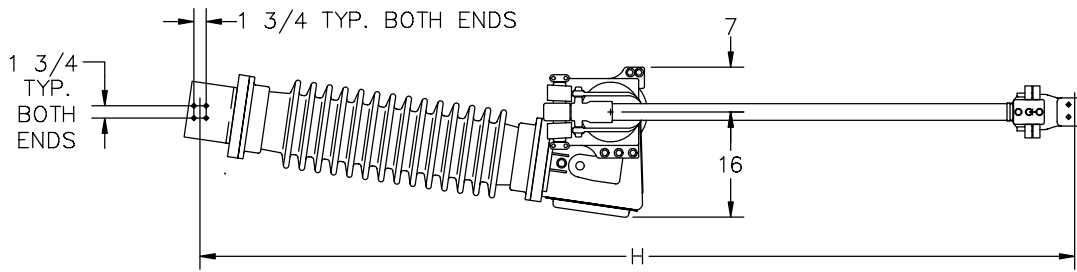


RATINGS AND DIMENSIONS TYPE LSH-B (SSLLC BEARINGS)

REV. 1



WEIGHT IN POUNDS.
DIMENSIONS IN INCHES.

kV	INS. BIL. kV & BLADE BIL. kV	INTER. BIL. kV	INSUL. TYPE	DIMENSIONS IN INCHES (APPROX.)								NET WEIGHT EACH SINGLE POLE UNIT WITH INSUL. (LESS PIPE & CONTROLS)
				A BASE LENGTH	B REAR INSUL. SPACING	C FRONT INSUL. SPACING	D INSUL. HEIGHT	E TERMINAL PAD HEIGHT	F OPEN POSITION HEIGHT	G INSUL. MTG. SPACER	H TERMINAL PAD SPACING	
15.5	110	350	TR-225	87 3/8	58 7/8	18	12	41 1/2	72 1/8	4 7/8	82 1/2	1151
25.8	150	350	TR-227	90 3/8	57 3/8	21	15	44 1/2	78 1/8	4 7/8	85 1/2	1193
38.0	200	350	TR-231	96 3/8	57 3/8	27	20	49 1/2	89 1/8	4 7/8	91 1/2	1241
48.3	250	350	TR-267	102 3/8	57 3/8	33	24	53 1/2	99 1/8	4 7/8	97 1/2	1352
72.5	350	350	TR-276	114 3/8	57 3/8	45	30	59 1/2	117 1/8	4 7/8	109 1/2	1415
121	550	550	TR-286	129 3/8	57 3/8	60	45	74 1/2	147 1/8	4 7/8	124 1/2	1705
145	650	650	TR-288	156 1/2	72 1/2	72	54	83 1/2	168 1/8	4 7/8	151 5/8	1795
169	750	750	TR-291	168 1/2	72 1/2	84	62	91 3/8	188 1/8	4 7/8	163 5/8	1945
242	900	900	TR-304	189 1/2	81 1/2	96	80	109 1/2	217 7/8	4 7/8	184 5/8	2700

TYPICAL WEIGHT OF PIPE & CONTROLS 400 LBS (TOTAL FOR 3 PHASE UNIT). TYPICAL WEIGHT OF MOTOR OPERATOR 250 LBS.