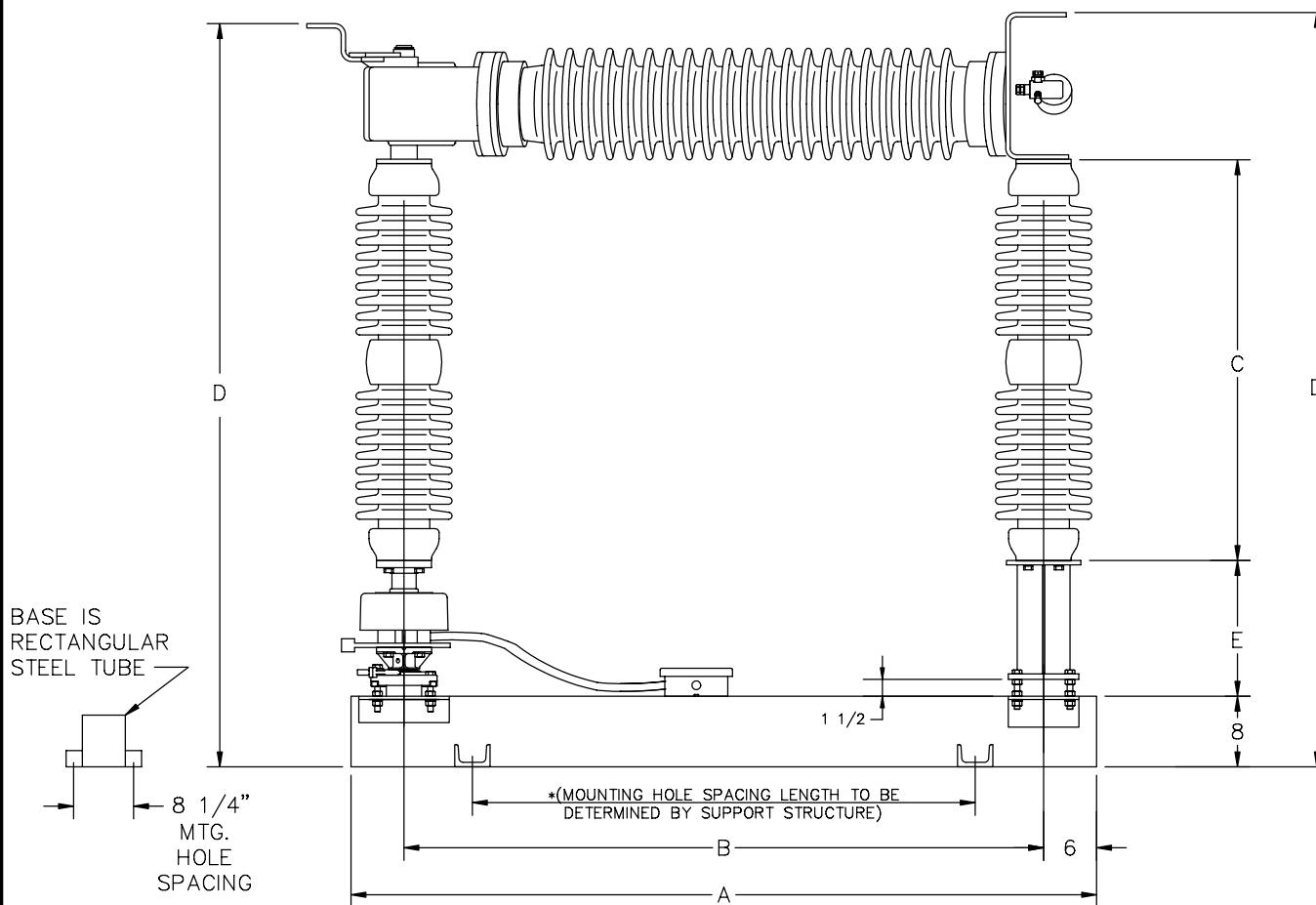
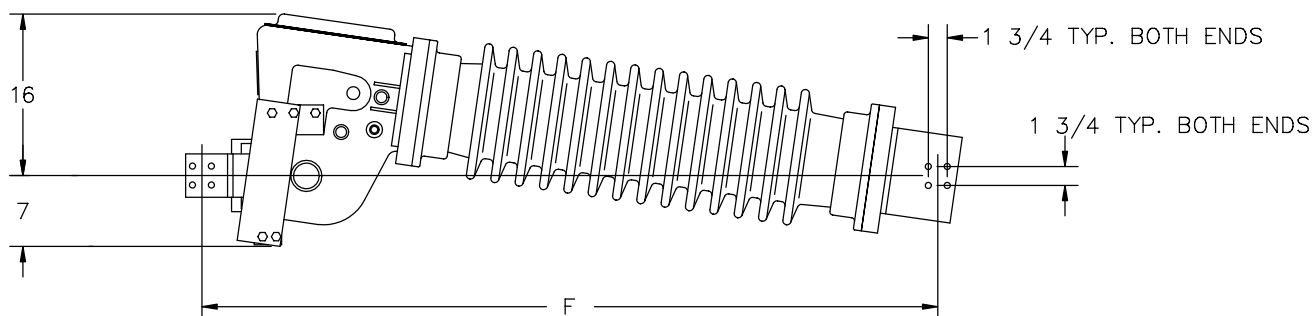


RATINGS AND DIMENSIONS TYPE CSH (SLLC BEARINGS)

REV. 1



DIMENSIONS IN INCHES.
WEIGHT IN POUNDS.

kV	INS. BIL. kV	INTER. BIL. kV	INSUL. TYPE	UNIT ASSY NUMBER	DIMENSIONS IN INCHES (APPROX.)						NET WEIGHT EACH SINGLE POLE UNIT WITH INSUL. (LESS PIPE & CONTROLS)
					A	B	C	D	E	F	
15.5	110	350	TR-225	81011119	69 3/8	57 3/8	12	50 7/8	14 1/4	68	976
25.8	150	350	TR-227	81011120	69 3/8	57 3/8	15	53 7/8	14 1/4	68	1004
38.0	200	350	TR-231	81011121	69 3/8	57 3/8	20	58 7/8	14 1/4	68	1036
48.3	250	350	TR-267	81011122	69 3/8	57 3/8	24	62 7/8	14 1/4	68	1110
72.5	350	350	TR-276	81011123	69 3/8	57 3/8	30	68 7/8	14 1/4	68	1152
121	550	550	TR-286	81021108	69 3/8	57 3/8	45	83 7/8	14 1/4	68	1210
145	650	650	TR-288	81021109	84 1/2	72 1/2	54	92 7/8	14 1/4	83 1/8	1260
169	750	750	TR-291	81021110	84 1/2	72 1/2	62	100 7/8	14 1/4	83 1/8	1340
242	900	900	TR-304	81021111	93 1/2	81 1/2	80	118 7/8	14 1/4	92 1/8	1750

TYPICAL WEIGHT OF PIPE & CONTROLS 400 LBS (TOTAL FOR 3 PHASE UNIT). TYPICAL WEIGHT OF MOTOR OPERATOR 250 LBS.