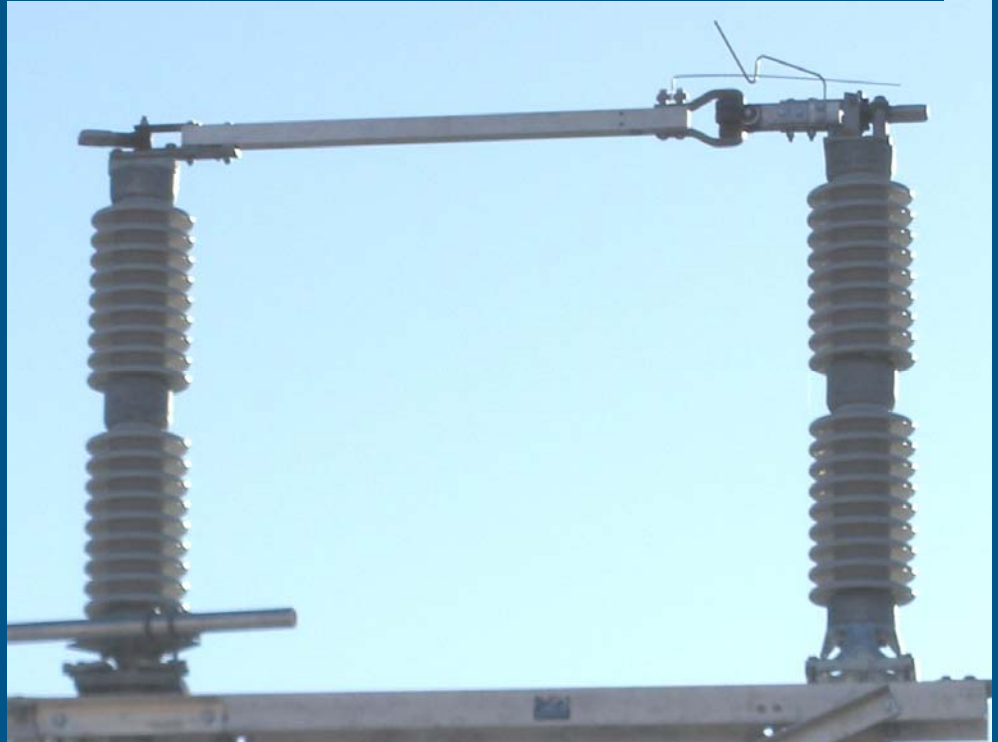


# ES-1

## Aluminum Single Side Break Switch

- 72.5 kV – 145 kV
- 350 kV BIL – 650 kV BIL
- 1200 A Continuous Current
- 61 kA Momentary Current
- Aluminum Live Part Construction
- Suitable for Horizontal Upright, Vertical, Underhung, Phase-Over-Phase, and Phase-Opposite-Phase Mounting
- Square Blade Construction for Maximum Rigidity and Current Carrying Surface Area
- 4 Hole NEMA Tin Plated Copper Terminal Pads
- Maintenance-Free Bearings
- Single Channel or Double Channel Base Designs
- Slant Jaw End Insulator Version Also Available
- Available with a Wide Variety of Accessories



ES-1 123 kV, 1200 A With Optional Whip Type Arcing Horns Depicted In Above Photo

### The Industry's Broadest Line Of Disconnect Switch Offerings Expands Again

In response to a market need for a reliable, low operating effort, subtransmission and transmission class single side break switch; particularly for non-substation applications such as pole mounted phase-over-phase and phase-opposite-phase; Southern States introduces the ES-1 aluminum single side break switch. The ES-1 is available for all air break switch applications, including:

- Line Disconnecting
- Line Sectionalizing
- Isolation of Other Substation Equipment (such as circuit breakers, circuit switchers, power transformers, etc.)
- Bypassing Other Substation Equipment
- Bus Tie Positions
- Line Dropping/Cable Dropping/Magnetizing Current Interrupting (when furnished with appropriate arcing horns)
- Loop Splitting/Load Breaking (when furnished with appropriate interrupters)



# ES-1

## Aluminum Single Side Break Switch



### Ratings:

kV	BIL (kV)	Continuous Current (A)	Momentary Current (kA)	TR Number	Catalog Number
72.5	350	1200	61	216	ES-1-721200
123	550	1200	61	286	ES-1-1231200
145	650	1200	61	288	ES-1-1451200

### Key Features:

- Unique short blade design attached to non-rotating insulator with live part pivot point produces very low operating effort
- Live part guide stop assures that the short blade is in the correct position when open to allow proper contact seating between it and the longer blade during the closing operation and when fully closed
- Unlike most single side break switches, it does not require slam-in action to seat contacts; allowing the use of a manual gear crank operator if desired in lieu of a manual swing handle (It can also be operated via a manual swing handle or electric motor operator, if desired, at all of its ratings.)
- Does not require dual speed motor operator to properly seat contacts in the fully closed position (A Southern States VM-1 or VM-1SE motor operator is ideally suited for use with it.)
- Can be outfitted with standard arcing horns, whip type arcing horns, loop splitting interrupters, or full load break interrupters depending upon the required duty
- Square aluminum tube blades, the same blade type and contacts used on the time proven Southern States EC-1 center break switch and Southern States EC-1V center break Vee switch

### Request For Quote Information:

When requesting a quote, please include the following information:

- Catalog number
- Mounting position
- Type of operator (manual or motor)
- Any accessories required
- Any special considerations or specifications

### Available Accessories:

- Standard arcing horns
- Whip type arcing horns
- Threaded clevises
- Position indicators
- Auxiliary switch
- Special insulators (brown, high creep, high strength, polymer)
- Grounding studs
- Ground switches
- Interlocks (key, mechanical, electrical)
- Spill gaps
- Terminal connectors
- Braidless grounding device
- Insulated vertical pipe
- Insulated interphase pipe
- Mounting frame
- Support structure
- Operator ground mat
- others



The Quality Name in High Voltage Switching

Note: for dimensional information on the ES-1 switch please contact Southern States for drawing(s) of the rating(s) of interest.

Southern States, LLC  
30 Georgia Avenue  
Hampton, GA 30228  
e-mail: [sales@southernstatesLLC.com](mailto:sales@southernstatesLLC.com)  
phone: 770-946-4562  
fax: 770-946-8106  
website: [www.southernstatesLLC.com](http://www.southernstatesLLC.com)