

SSB-A

Aluminum Single Side Break Switch

- 15.5 kV – 72.5 kV
- 110 kV BIL – 350 kV BIL
- 1200 A Continuous Current
- 61 kA Momentary Current
- Aluminum Tubular Blade Live Part Construction
- Suitable for Horizontal Upright, Vertical, or Underhung Mounting
- 6 Hole NEMA Tin Plated Copper Terminal Pads
- Maintenance-Free Bearings



The SSB-A Aluminum Live Parts Disconnect Switch Joins The Southern States Product Family

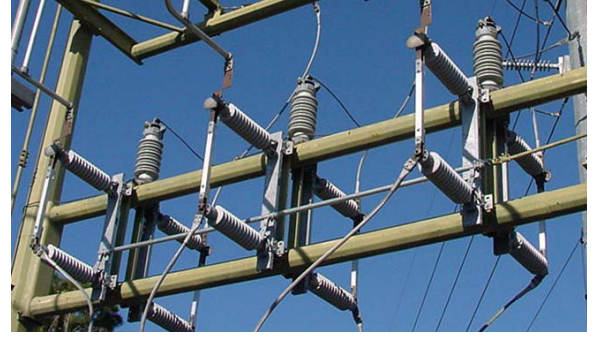
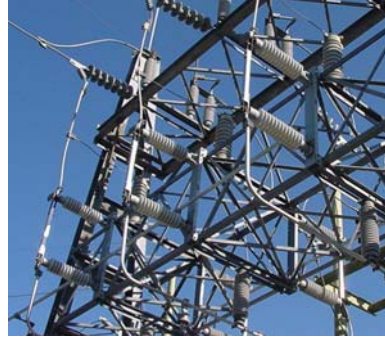
The SSB-A switch has it all: inherent simplicity, a minimum number of parts and adjustments, ease of installation, and versatility—all key characteristics which make it a growingly popular choice among customers. The SSB-A is available for all air break switch applications, including:

- Line Disconnecting
- Line Sectionalizing
- Isolation of Other Substation Equipment (such as circuit breakers, circuit switchers, power transformers, etc.)
- Bypassing Other Substation Equipment
- Bus Tie Positions
- Magnetizing Current Interrupting (when furnished with appropriate arcing horns)
- Load Breaking/Loop Splitting/Line Dropping/Cable Dropping (when furnished with appropriate arcing horns or interrupters)



SSB-A

Aluminum Single Side Break Switch



Ratings:

kV	BIL (kV)	Continuous Current (A)	Momentary Current (kA)	TR Number	Catalog Number
15.5	110	1200	61	205	SSB-A-151200
27	150	1200	61	208	SSB-A-271200
38	200	1200	61	210	SSB-A-381200
48.3	250	1200	61	214	SSB-A-481200
72.5	350	1200	61	216	SSB-A-721200



Request For Quote Information:

When requesting a quote, please include the following information:

- Catalog number
- Mounting position
- Type of operator (manual swing handle or motor)
- Any accessories required
- Any special considerations or specifications

Available Accessories:

- Standard arcing horns
- Whip type arcing horns
- Load break interrupters
- Loop break interrupters
- Threaded clevises
- Position indicators
- Auxiliary switch
- Special insulators (brown, high creep, polymer)
- Grounding studs
- Ground switches
- Interlocks (key, mechanical, electrical)
- Spill gaps
- Terminal connectors
- Braidless grounding device
- Insulated vertical pipe
- Insulated interphase pipe
- Mounting frame
- Support structure
- Operator ground mat
- others



The Quality Name in High Voltage Switching

Note: for dimensional information on the SSB-A switch please contact Southern States for drawing(s) of the rating(s) of interest.

Southern States, LLC
30 Georgia Avenue
Hampton, GA 30228
e-mail: sales@southernstatesLLC.com
phone: 770-946-4562
fax: 770-946-8106
website: www.southernstatesLLC.com